

**GLENN COUNTY
WATER ADVISORY COMMITTEE**

Glenn County Department of Agriculture
720 North Colusa St., Willows, CA 95988
Phone: 530.934.6501 FAX: 530.934.6503
Email: wateradv@countyofglenn.net
Website: <http://www.glenncountywater.org/>

AGENDA

MEETING DATE: Tuesday, June 9, 2015
TIME: 1:30 P.M.
PLACE: Glenn-Colusa Irrigation District
344 East Laurel Street
Willows, CA 95988

I. INTRODUCTIONS:

Water Advisory Committee Members:

David Alves	Central River Irrigation Districts
Terry Bressler	East County Reclamation and Irrigation Districts
Ted Trimble	East County Reclamation and Irrigation Districts
Sandy Willard Denn	Glenn-Colusa Irrigation District
Larry Domenighini	Glenn County Farm Bureau
Ken Sullivan	Orland Unit Water Users Association
Bruce Roundy	Resource Conservation District
Mike Vereschagin	Tehama Colusa Canal Authority Districts
Mike Alves	Tehama Colusa Canal Authority Districts
Mark Lohse	At-Large Private Pumpers (Agricultural/Municipal/Industrial)
Rob Vlach	At-Large Private Pumpers (Agricultural/Municipal/Industrial)
Darin Titus	At-Large Private Pumpers (Agricultural/Municipal/Industrial)
Vacant	At-Large Private Pumpers (Agricultural/Municipal/Industrial)

Technical Advisory Committee Members:

Lance Boyd	At-Large, South Area
Roy Hull	Department of Water Resources
Allan Fulton	UC Cooperative Extension
Matt Gomes	Glenn County Planning and Public Works
Kevin Backus	Glenn County Environmental Health
Ben Pennock	At-Large, Central Area
Vacant	Glenn County Department of Agriculture
Anjanette Shadley	At-Large, East Area
John Brooks	At-Large, North Area
Leigh McDaniel	Board of Supervisors (ex-officio)

II. APPROVAL OF MINUTES:

A. Consider approval of the Minutes from the meeting of February 10, 2015.

III. AGENDA ITEMS:

A. Public Comment:

Any person wanting to address the Water Advisory Committee on any item NOT ON TODAY'S AGENDA may do so at this time. The Water Advisory Committee will not be making decisions or determinations on items brought up during Public Comment.

B. Discussion and/or Action Items:

1. Update on member vacancies
2. Reports
 - a) TAC
 - i. BMO Committee
 - b) Education/Outreach Committee
 - c) Legislation Committee
3. DWR update- Spring Groundwater Levels
4. Review Spring BMO conditions
5. Sustainable Groundwater Management Act
 - a) Colusa Basin Governance facilitation
 - b) Roundtable discussion
6. Drought-Roundtable discussion
7. Meeting schedule
8. Other Topics of Interest

B. Communications:

D. Member Reports:

At this time WAC members are encouraged to discuss upcoming or ongoing activities that may be of interest to the committee.

IV. NEXT MEETINGS:

The next WAC meeting will be tentatively scheduled at this meeting.

The next TAC meeting is tentatively scheduled for July 2015.

Any documents related to agenda items that are made available to the Water Advisory Committee before the meeting shall be available for review during regular business hours at 720 North Colusa Street, Willows, California, 95988.

In compliance with the Americans with Disabilities Act, if you need special assistance or accommodations to participate in this meeting, please contact Lisa Hunter at the Glenn County Department of Agriculture at 530-934-6501. Notification at least 48 hours prior to the meeting will enable the Glenn County Water Advisory Committee to make reasonable arrangements to ensure accessibility to this meeting. (28 CFR 35.101-35.164 ADA Title II.)

GLENN COUNTY WATER ADVISORY COMMITTEE

Glenn County Department of Agriculture
720 North Colusa St., P.O. Box 351, Willows, CA 95988
Phone: (530) 934-6501 Fax: (530) 934-6503

E-mail: wateradv@countyofglenn.net Web Page: www.glenncountywater.org

MINUTES

Meeting Date: Tuesday, February 10, 2015

Time: 1:30 pm

Place: Glenn-Colusa Irrigation District
344 East Laurel Street
Willows, CA 95988

Water Advisory Committee Members Present:

Larry Domenighini	Glenn County Farm Bureau
Ted Trimble	Western Canal Water District
Mike Alves	TC Canal Authority Districts
Mark Lohse	Private Pumper
Bruce Roundy	Resource Conservation District
Ken Sullivan	Orland Water Users Association
David Alves	Central River Irrigation Districts
Terry Bressler	East County Rec & Irr Districts
Rob Vlach	Private Pumper
John Garner	Private Pumper

Water Advisory Committee Members Absent:

Darin Titus	Private Pumper
Mike Vereschagin	TC Canal Authority Districts
Sandy Willard-Denn	GCID

Technical Advisory Committee Members Present:

Roy Hull	DWR
Ben Pennock	Central Area
Matt Gomes	Glenn County PPWA
Jim Donnelly	Glenn Co. Ag Dept.
John Brooks	North Area

Others in Attendance:

Lisa Hunter	Glenn Co. Ag Dept.
Brian Taylor	Glenn Co. Ag Dept.
Erin Smith	DWR
Jeff Sutton	TC Area
Hank Wallace	Self
Carol Perkins	Butte Environmental Council
Lester Messina	CGSP
Mary Fahey	Colusa County
George Pendell	
Will Martin	Capay Farms
Zac Dickens	GCID
Geoff Fulks	Cal Water
Barbara Hennigan	BSBAGU

- I. INTRODUCTIONS: Those in attendance introduced themselves.
- II. APPROVAL OF MINUTES: Draft minutes from the previous meeting on December 9, 2014 were unanimously approved as submitted.
- III. AGENDA ITEMS:
 - A. **Public Comment:** None.

B. Discussion & Action Items:

1. Update on member vacancies

Mr. Terry Bressler was welcomed to the Water Advisory Committee as the newly appointed representative of the East County Reclamation and Irrigation Districts.

2. Reports

a) TAC update: The Technical Advisory Committee last met December 15, 2014, to review the responsibilities of the committee as detailed in the county ordinance, receive an update on fall groundwater levels from Roy Hull (DWR), and to continue to discuss revisions to the current Basin Management Objectives. Discussion included a review of how the initial BMO levels came to be established. Next steps include incorporating updated cumulative frequency charts, potential redefinition of stage alert levels, and protocol in response to stage alert levels. An Ad Hoc Committee has been formed to expedite the revision process, and is expected to bring suggestions forward at the next meeting. Possible changes to abnormal groundwater level reporting and responses to these reports will also be proposed. TAC members will bring ideas for report revisions to the next meeting.

b) Education / Outreach Committee update: Mr. Domenighini reviewed the press release included in the agenda packet concerning the planned outreach meetings. The first will be Thursday February 19th at Willows City Hall, the 2nd will be Feb. 26th at the Orland Fairgrounds and the last meeting will be March 5th at the Ord Bend Community Hall. The meetings will be held from approximately 6:30 to 8:00 and will address the county's hydrology, summarize WAC activities and provide information concerning the recent groundwater legislation. To raise awareness of the meetings, meeting announcements were sent to approximately 1,000 pesticide permit holders within the county, announcements will be placed in the upcoming newsletter by the Glenn County Farm Bureau, an announcement was in the UC Cooperative Extension newsletter, a notice was placed on the WAC website, and a copy of the press release was sent to the local newspapers. Glenn County Farm Bureau and the UC Cooperative Extension are co-sponsoring the meetings.

c) Legislation Committee update: On January 20th, Mr. Domenighini and Ms. Hunter, in conjunction with Thad Bettner from GCID, presented a summary of the recent groundwater legislation to the Board of Supervisors. Mr. Domenighini also referenced a memo to WAC members that is included in the agenda packet asking for their input on next steps for the legislation committee. One step could be to have meetings with districts/agencies to begin coordinating the establishment of local GSAs. Jeff Sutton from the TCCA asked whether there was still an opportunity to participate in this committee. He also recommended that local agencies be prepared to participate in the legislative process to help shape forthcoming regulations. Mr. Domenighini encouraged local agencies to contact himself or Ms. Hunter with their input regarding the next steps for the committee.

3. DWR Update

Erin Smith from the Department of Water Resources presented an update on county and regional groundwater levels. She began with a water year index from 1971 through 2014, showing several recent dry/critical years, and the Northern Sierra Precipitation 8-station index, which showed the daily precipitation for the current year is approaching average levels. Next, she discussed the updated fall groundwater change elevation maps. From 2004-2014 for wells of intermediate depth (100-450 feet) and deeper wells (600+ feet) across the valley as a whole and for Glenn County alone, the changes in elevation were generally downward, being more pronounced in the deeper wells. Approximately 155 wells are measured in Glenn County. In closing, Ms. Smith promoted the DWR's Groundwater Information Center as an additional resource for local agencies and the general public.

Mr. Hull then transitioned into a presentation on the results of a GPS ground surface elevation study. A GPS survey grid was established for Glenn County in 2004, and expanded to include the rest of the valley in 2008 when the second set of measurements were collected within the county. An analysis of the results was conducted in 2015 (for Glenn County only as the rest of the valley was lacking a second data set). Accounting for the margin of error inherent to the survey (± 2 -4 cm, or .75-1.5 inches, approximately), there were two areas of interest within the county. To the southwest of Orland there was an elevation change which was at the upper limit of the margin of error (approximately 1.5 inches) but may be considered significant because it is substantially larger than the negligible values observed in the rest of the county. An even more significant change was detected to the southeast of Hamilton City, where the ground surface elevation showed a change of 4-5 inches, a change Mr. Hull defined as “significant enough to warrant [an] investigation.” At present, there is insufficient data to attribute the change to a particular cause.

Data collected from an extensometer located off of Highway 32 between Orland and Hamilton City between 2005-2015 showed periodic variations in ground surface elevation of .15-.05 inches but no cumulative long-term changes. Mr. Hull explained that this is indicative of a certain level of elasticity within the soil composition of the county. However, the presence of clay layers (which become compressed when dehydrated and do not re-expand) at shallow depths in certain areas may make them susceptible to permanent subsidence in the event of prolonged drainage. Follow-up surveys incorporating additional data points (including ones in adjacent counties) may be necessary to determine what effects, if any, have resulted from the recent drought conditions.

4. Groundwater quality assessment report

Lester Messina of the Glenn-Colusa Subwatershed presented a summary of the Sacramento Valley Water Quality Coalition’s groundwater quality assessment report. The report addressed the vulnerability of the region in terms of its susceptibility to increased nitrate concentrations and included results of recent nitrate sampling in Glenn, Colusa, Shasta, Butte, Yuba, and Sutter counties. Overall, the Nitrogen Hazard Index for Glenn and surrounding counties is low compared to more problematic areas of the state but there are isolated regions of high vulnerability.

5. Other topics of interest: None

C. Communications: None.

D. Member Reports: Larry Domenighini commented on the projected inflow to Shasta.

IV. NEXT MEETINGS:

The next WAC meeting will be scheduled for April, May, or June 2015. Informational memos may be sent in lieu of meetings depending on topics to be covered. The Legislative ad hoc committee will schedule meetings with the districts and other agencies/cities regarding GSA establishment. Date and time to be determined. The meeting was adjourned at 3:40 p.m.



Water Advisory Committee

720 North Colusa Street, P. O. Box 351, Willows, CA 95988

Phone: 530-934-6501 Fax: 530-934-6503

Email: wateradv@countyofglenn.net

Web page: <http://www.glenncountywater.org/>

Memo

To: WAC/TAC members

From: Larry Domenighini, WAC chairman

Date: June 1, 2015

Re: June 9, 2015 WAC meeting

The next WAC meeting will be June 9, 2015, 1:30pm at the GCID office. Among the agenda topics, we will discuss and review the following items:

Outreach committee report: The outreach meetings held in February and March were very successful. The turnout was good in all three locations-attendance was about 60 in Willows, 85 in Orland, and 55 in Ord Bend. Copies of the presentations have been posted to the website. In addition, a separate outreach meeting, sponsored by the Glenn County Rangeland Association, was held in Elk Creek during the same time frame. All four of the outreach meetings had a productive question/answer portion. Thank you to all that attended or participated. I believe these were a great success and we should consider providing more outreach in the future.

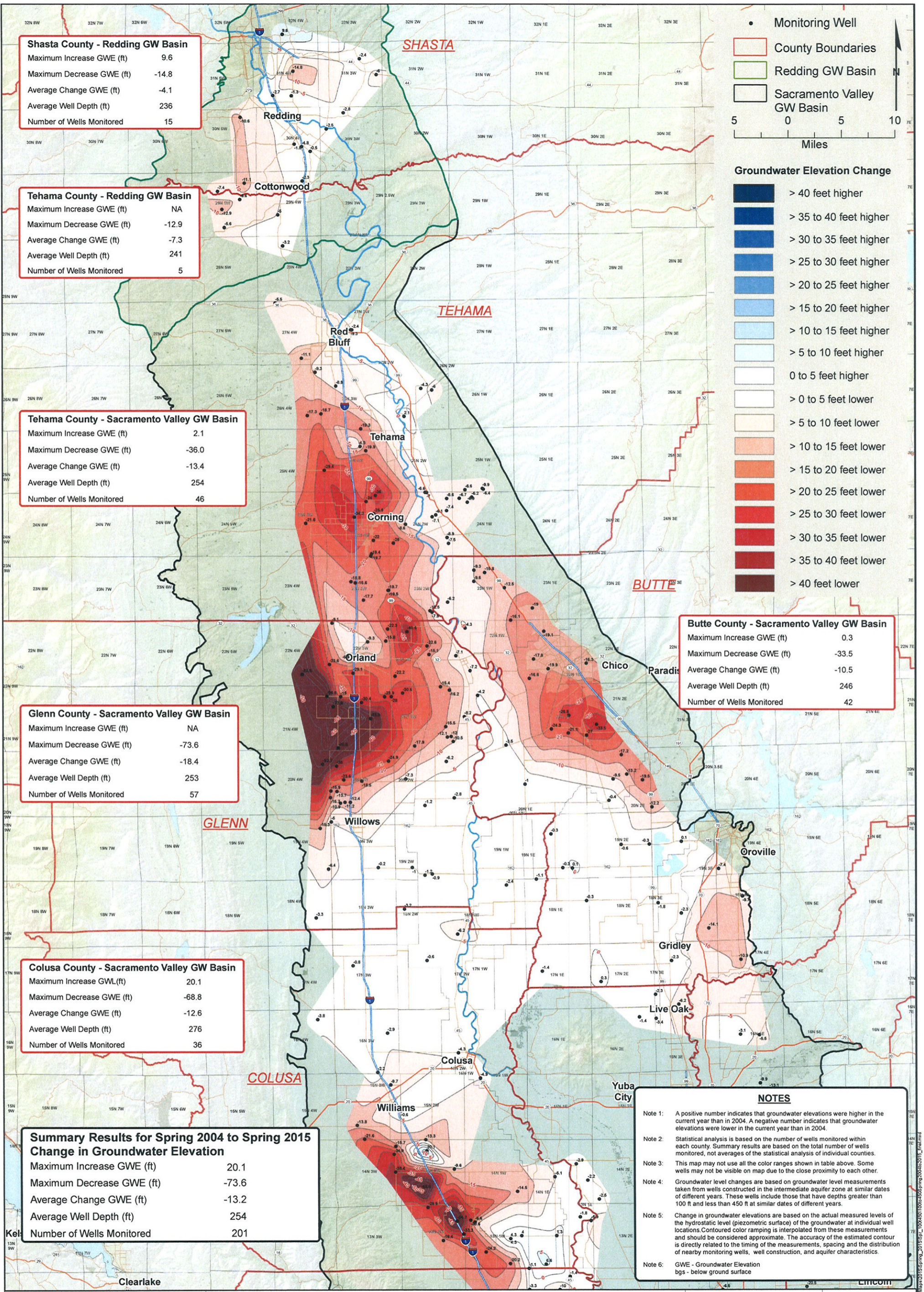
WAC vacancy: There is one vacancy on the WAC for an at-large private pumper. Dennis Hoffman (City of Orland) and Del Reimers have applied for this position. The Board of Supervisors will be considering this appointment at their June 2 meeting.

Spring groundwater measurements: Erin Smith from DWR will provide a full overview of the spring groundwater elevations. Attached are two of the maps: the 100-450 ft. measurements for 2004-2015 and the 100-450 ft. measurements for 2014-2015.

Groundwater Sustainability Agency (GSA) updates: Provident Irrigation District, Princeton-Codora-Glenn Irrigation District, Kanawha Water District, and Glide Water District have submitted notices to DWR electing to become GSAs. Attached is a letter recently received by the WAC concerning establishment of a private pumper GSA. The Board of Supervisors at their March 31, 2015 meeting approved the attached Scope of Work, 2015 Colusa Basin Sustainability Groundwater Management Act (SGMA) Governance Collaboration. This is a facilitation effort by Kearns and West that is funded by the California Water Foundation *"to support a collaborative process for local interests to jointly explore key topics related to Groundwater Sustainability Agency (GSA) formation for the Colusa Basin."*

If you have any questions or concerns, please feel free to contact myself or Lisa Hunter.

Representing: BOS District 3 Private Pumpers; BOS District 5 Private Pumpers; City of Orland, City of Willows; East Corning Basin Private Pumpers; Glenn County Farm Bureau; Glenn County Supervisors; Glenn-Colusa Irrigation District; Glide Water District, Kanawha Water District, Orland-Artois Water District, Orland Unit Water Users Assn., Princeton-Codora-Glenn Irrigation District, Provident Irrigation District; Reclamation District No. 1004; Reclamation District No. 2106; Resource Conservation District; Stony Creek Water District; West Colusa Basin Private Pumpers; West Corning Basin Private Pumpers; Western Canal Water District; Willow Creek Mutual Water Company.



Shasta County - Redding GW Basin	
Maximum Increase GWE (ft)	9.6
Maximum Decrease GWE (ft)	-14.8
Average Change GWE (ft)	-4.1
Average Well Depth (ft)	236
Number of Wells Monitored	15

Tehama County - Redding GW Basin	
Maximum Increase GWE (ft)	NA
Maximum Decrease GWE (ft)	-12.9
Average Change GWE (ft)	-7.3
Average Well Depth (ft)	241
Number of Wells Monitored	5

Tehama County - Sacramento Valley GW Basin	
Maximum Increase GWE (ft)	2.1
Maximum Decrease GWE (ft)	-36.0
Average Change GWE (ft)	-13.4
Average Well Depth (ft)	254
Number of Wells Monitored	46

Glenn County - Sacramento Valley GW Basin	
Maximum Increase GWE (ft)	NA
Maximum Decrease GWE (ft)	-73.6
Average Change GWE (ft)	-18.4
Average Well Depth (ft)	253
Number of Wells Monitored	57

Colusa County - Sacramento Valley GW Basin	
Maximum Increase GWE (ft)	20.1
Maximum Decrease GWE (ft)	-68.8
Average Change GWE (ft)	-12.6
Average Well Depth (ft)	276
Number of Wells Monitored	36

Summary Results for Spring 2004 to Spring 2015 Change in Groundwater Elevation	
Maximum Increase GWE (ft)	20.1
Maximum Decrease GWE (ft)	-73.6
Average Change GWE (ft)	-13.2
Average Well Depth (ft)	254
Number of Wells Monitored	201

● Monitoring Well

□ County Boundaries

□ Redding GW Basin

□ Sacramento Valley GW Basin

5 0 5 10
Miles

Groundwater Elevation Change

- > 40 feet higher
- > 35 to 40 feet higher
- > 30 to 35 feet higher
- > 25 to 30 feet higher
- > 20 to 25 feet higher
- > 15 to 20 feet higher
- > 10 to 15 feet higher
- > 5 to 10 feet higher
- 0 to 5 feet higher
- > 0 to 5 feet lower
- > 5 to 10 feet lower
- > 10 to 15 feet lower
- > 15 to 20 feet lower
- > 20 to 25 feet lower
- > 25 to 30 feet lower
- > 30 to 35 feet lower
- > 35 to 40 feet lower
- > 40 feet lower

Butte County - Sacramento Valley GW Basin	
Maximum Increase GWE (ft)	0.3
Maximum Decrease GWE (ft)	-33.5
Average Change GWE (ft)	-10.5
Average Well Depth (ft)	246
Number of Wells Monitored	42

- NOTES**
- Note 1: A positive number indicates that groundwater elevations were higher in the current year than in 2004. A negative number indicates that groundwater elevations were lower in the current year than in 2004.
 - Note 2: Statistical analysis is based on the number of wells monitored within each county. Summary results are based on the total number of wells monitored, not averages of the statistical analysis of individual counties.
 - Note 3: This map may not use all the color ranges shown in table above. Some wells may not be visible on map due to the close proximity to each other.
 - Note 4: Groundwater level changes are based on groundwater level measurements taken from wells constructed in the intermediate aquifer zone at similar dates of different years. These wells include those that have depths greater than 100 ft and less than 450 ft at similar dates of different years.
 - Note 5: Change in groundwater elevations are based on the actual measured levels of the hydrostatic level (piezometric surface) of the groundwater at individual well locations. Contoured color ramping is interpolated from these measurements and should be considered approximate. The accuracy of the estimated contour is directly related to the timing of the measurements, spacing and the distribution of nearby monitoring wells, well construction, and aquifer characteristics.
 - Note 6: GWE - Groundwater Elevation
bgs - below ground surface

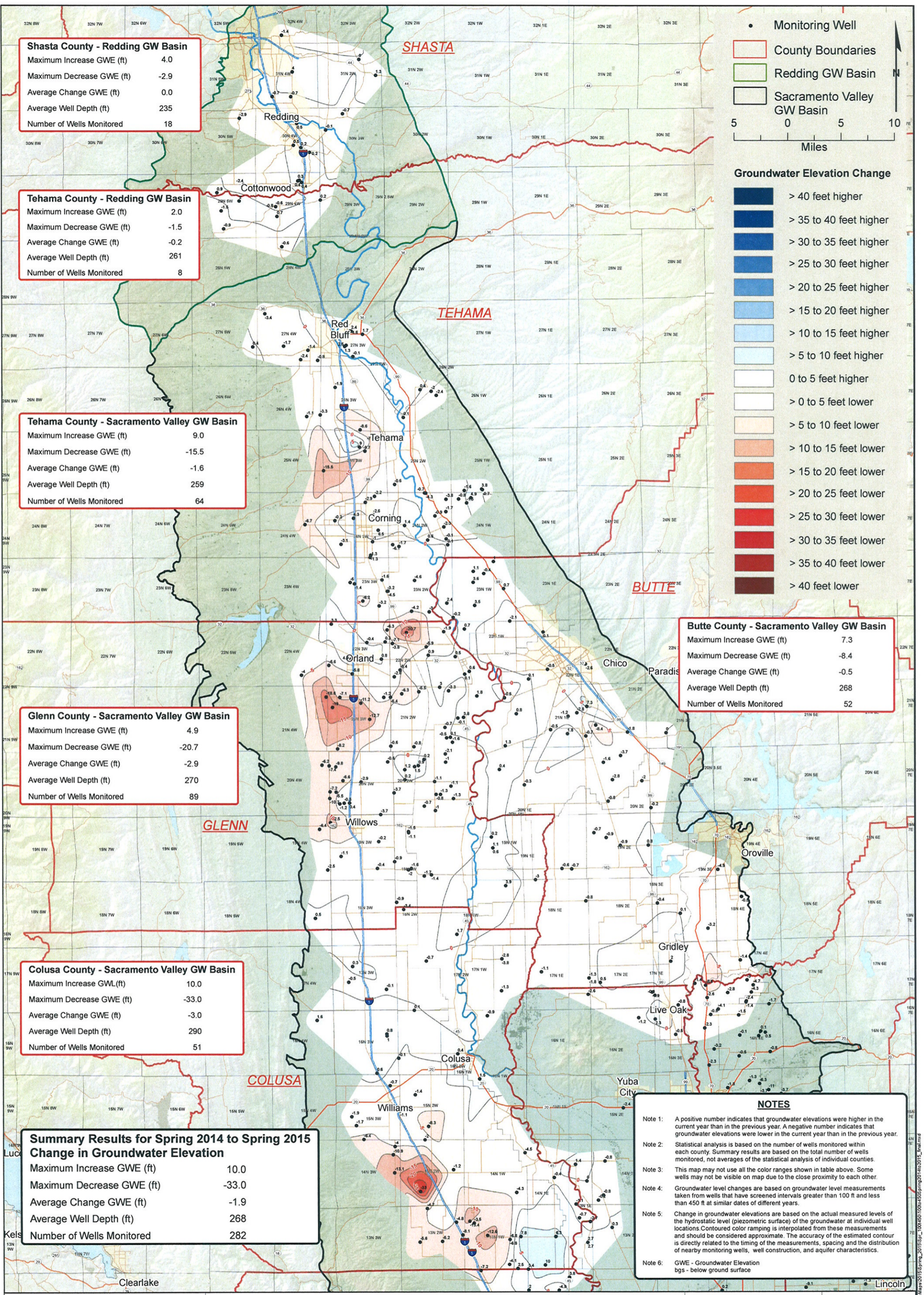
STATE OF CALIFORNIA
THE RESOURCES AGENCY
DEPARTMENT OF WATER RESOURCES
NORTHERN REGION OFFICE
2440 Main Street
Red Bluff, California 96080
(530) 529-7300

**NORTHERN SACRAMENTO VALLEY
CHANGE IN GROUNDWATER ELEVATION MAP
SPRING 2004 TO SPRING 2015
100 to 450 ft WELL DEPTHS**
(Well depths greater than 100 ft and less than 450 ft deep bgs)

PLATE 1C-B

Date: May 2015
BY: G. Gordon





Shasta County - Redding GW Basin	
Maximum Increase GWE (ft)	4.0
Maximum Decrease GWE (ft)	-2.9
Average Change GWE (ft)	0.0
Average Well Depth (ft)	235
Number of Wells Monitored	18

Tehama County - Redding GW Basin	
Maximum Increase GWE (ft)	2.0
Maximum Decrease GWE (ft)	-1.5
Average Change GWE (ft)	-0.2
Average Well Depth (ft)	261
Number of Wells Monitored	8

Tehama County - Sacramento Valley GW Basin	
Maximum Increase GWE (ft)	9.0
Maximum Decrease GWE (ft)	-15.5
Average Change GWE (ft)	-1.6
Average Well Depth (ft)	259
Number of Wells Monitored	64

Glenn County - Sacramento Valley GW Basin	
Maximum Increase GWE (ft)	4.9
Maximum Decrease GWE (ft)	-20.7
Average Change GWE (ft)	-2.9
Average Well Depth (ft)	270
Number of Wells Monitored	89

Colusa County - Sacramento Valley GW Basin	
Maximum Increase GWE (ft)	10.0
Maximum Decrease GWE (ft)	-33.0
Average Change GWE (ft)	-3.0
Average Well Depth (ft)	290
Number of Wells Monitored	51

Summary Results for Spring 2014 to Spring 2015 Change in Groundwater Elevation	
Maximum Increase GWE (ft)	10.0
Maximum Decrease GWE (ft)	-33.0
Average Change GWE (ft)	-1.9
Average Well Depth (ft)	268
Number of Wells Monitored	282

● Monitoring Well

□ County Boundaries

□ Redding GW Basin

□ Sacramento Valley GW Basin

5 0 5 10 Miles

Groundwater Elevation Change

- > 40 feet higher
- > 35 to 40 feet higher
- > 30 to 35 feet higher
- > 25 to 30 feet higher
- > 20 to 25 feet higher
- > 15 to 20 feet higher
- > 10 to 15 feet higher
- > 5 to 10 feet higher
- 0 to 5 feet higher
- > 0 to 5 feet lower
- > 5 to 10 feet lower
- > 10 to 15 feet lower
- > 15 to 20 feet lower
- > 20 to 25 feet lower
- > 25 to 30 feet lower
- > 30 to 35 feet lower
- > 35 to 40 feet lower
- > 40 feet lower

Butte County - Sacramento Valley GW Basin	
Maximum Increase GWE (ft)	7.3
Maximum Decrease GWE (ft)	-8.4
Average Change GWE (ft)	-0.5
Average Well Depth (ft)	268
Number of Wells Monitored	52

- NOTES**
- Note 1: A positive number indicates that groundwater elevations were higher in the current year than in the previous year. A negative number indicates that groundwater elevations were lower in the current year than in the previous year.
 - Note 2: Statistical analysis is based on the number of wells monitored within each county. Summary results are based on the total number of wells monitored, not averages of the statistical analysis of individual counties.
 - Note 3: This map may not use all the color ranges shown in table above. Some wells may not be visible on map due to the close proximity to each other.
 - Note 4: Groundwater level changes are based on groundwater level measurements taken from wells that have screened intervals greater than 100 ft and less than 450 ft at similar dates of different years.
 - Note 5: Change in groundwater elevations are based on the actual measured levels of the hydrostatic level (piezometric surface) of the groundwater at individual well locations. Contoured color ramping is interpolated from these measurements and should be considered approximate. The accuracy of the estimated contour is directly related to the timing of the measurements, spacing and the distribution of nearby monitoring wells, well construction, and aquifer characteristics.
 - Note 6: GWE - Groundwater Elevation
bgs - below ground surface

STATE OF CALIFORNIA
THE RESOURCES AGENCY
DEPARTMENT OF WATER RESOURCES
NORTHERN REGION OFFICE
2440 Main Street
Red Bluff, California 96080
(530) 529-7300

**NORTHERN SACRAMENTO VALLEY
CHANGE IN GROUNDWATER ELEVATION MAP
SPRING 2014 TO SPRING 2015
100 to 450 ft Well Depths**
(Well depths greater than 100 ft and less than 450 ft deep bgs)

PLATE 1C-A

Date: May 2015
BY: G. Gordon



GARNER LAW OFFICE

109 N. Marshall Avenue
P.O. Box 908
Willows, CA 95988

Telephone (530) 934-3324
Fax (530) 934-2334

Elton R. Garner, Jr.
John R. Garner

May 21, 2015

**NOTICE OF INTENT TO FORM A NEW SPECIAL DISTRICT TO COMPLY WITH
THE SUSTAINABLE GROUNDWATER MANAGEMENT ACT (SGMA) OF 2014 AND
BECOME A GROUNDWATER SUSTAINABILITY AGENCY (GSA)**

TO BE DISTRIBUTED TO:

EACH GLENN COUNTY SUPERVISOR
GLENN COUNTY CAO, LAFCO
GLENN COUNTY LAFCO
GLENN COUNTY WATER ADVISORY BOARD
ALL LOCAL AGENCIES IN GLENN COUNTY THAT CAN POTENTIALLY ELECT TO
BECOME GSA'S
BUTTE COUNTY CAO, LAFCO
COLUSA COUNTY CAO, LAFCO

TO WHOM IT MAY CONCERN:

This letter is to advise local agencies in and around Glenn County which may have an interest in, or responsibility for complying with the 2014 Sustainable Groundwater Management Act that an application will be filed with the Glenn County Local Agency Formation Commission to form a new water district.

Local area landowners and farmers will petition Glenn County LAFCO to create a new water district consisting of territories not currently serviced by an existing water district across portions of five Glenn County basin management objective sub-areas: East Corning Private Pumpers, BOS District 5 Private Pumpers, BOS District 3 Private Pumpers, the Glenn-Colusa Irrigation District BMO Sub-Area, and the Princeton Codora Irrigation District BMO Sub-Area. The sole and exclusive purpose of the proposed new water district will be to attain public agency status in order to comply with SGMA and authorize the election to become a Groundwater Sustainability Agency (GSA). It is important to applicants, which are long-term, generational landowners and farmers, to be responsible for managing groundwater use in the area of the proposed new water district and otherwise complying with SGMA through a locally managed and operated water district. The attached map generally depicts the areas potentially affected by the proposed new water district.

For additional information, please contact:

John Garner, Garner Law Offices at (530) 934-3324; jrg@erglaw.net;
Valerie Kincaid, O'Laughlin & Paris at (916) 514-5245; ykincaid@olaughlinparis.com; or
John O'Farrell, John O'Farrell and Associates at (916) 952-8935; ofarrellj@comcast.net

Thank you for your time and attention to this matter.

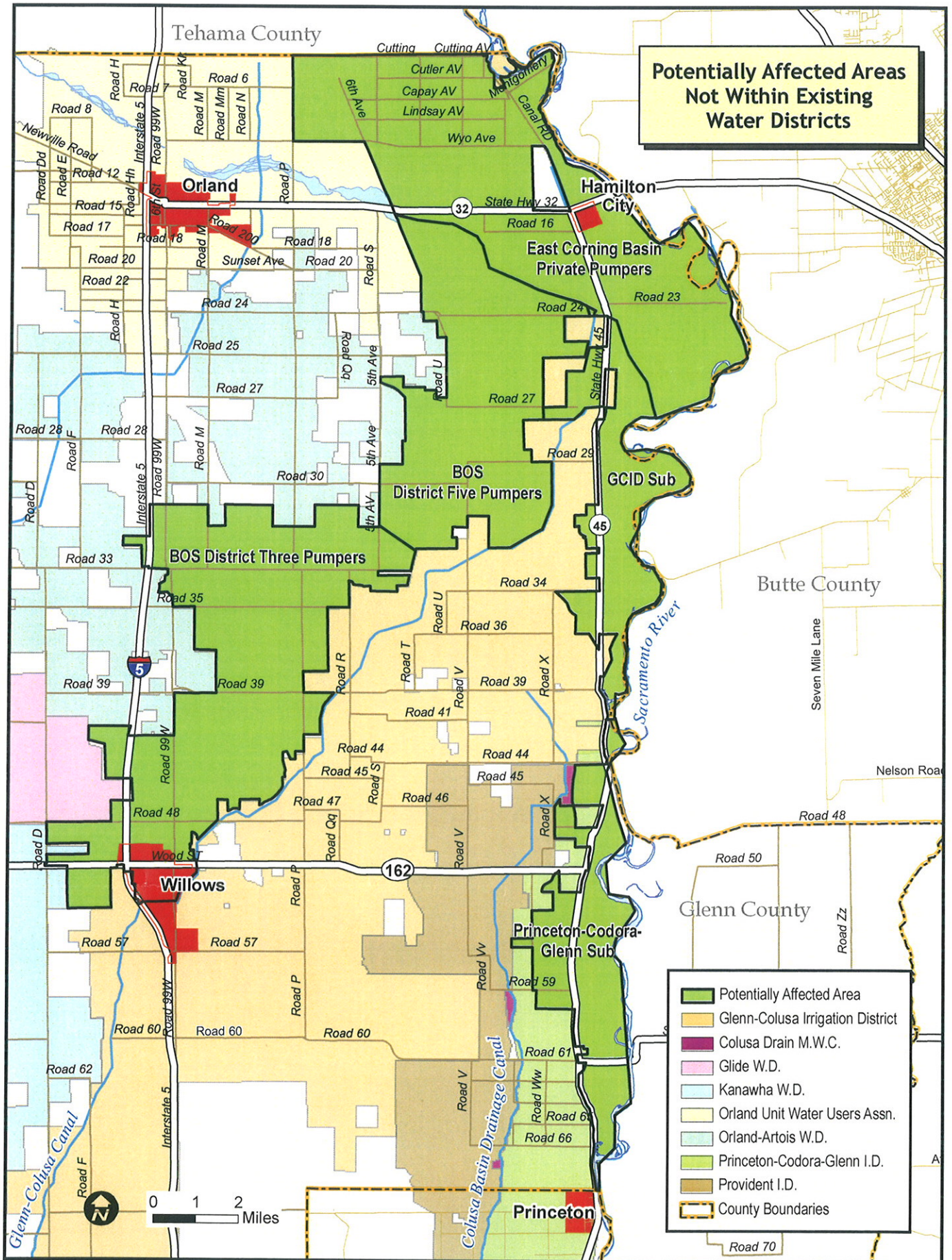
Sincerely,



JOHN R. GARNER

cc:

Mike Harty, Kearns and West
David Guterrez, State of California, DWR



Potentially Affected Areas
Not Within Existing
Water Districts

- Potentially Affected Area
- Glenn-Colusa Irrigation District
- Colusa Drain M.W.C.
- Glide W.D.
- Kanawha W.D.
- Orland Unit Water Users Assn.
- Orland-Artois W.D.
- Princeton-Codora-Glenn I.D.
- Provident I.D.
- County Boundaries

0 1 2 Miles



SCOPE OF WORK

2015 Colusa Basin SGMA governance collaboration

1. Purpose

To support a collaborative process for local interests to jointly explore key topics related to Groundwater Sustainability Agency (GSA) formation for the Colusa Basin. Local interests include the local agencies eligible to become a GSA such as Glenn County, Colusa County, and GCID, and other key stakeholders such as independent pumpers, Farm Bureaus, and environmental/conservation organizations. An effective process will provide an opportunity to explore governance options in a collaborative way that serves as a catalyst for action and as a broad foundation for GSA formation.

The process would focus on:

- Building trust and understanding among local interests as they evaluate their role and participation in a GSA formation process.
- Building shared knowledge and understanding among local interests about basin conditions, SGMA requirements, GSA responsibilities, and governance options.
- Identifying areas of agreement and disagreement regarding GSA formation for the Colusa Basin.
- Identifying significant threshold choices and decisions about governance for sustainable management of the Colusa Basin. Depending on circumstances, an initial set of joint recommendations about those choices and decisions could be developed to serve as a focus for subsequent discussions.
- Defining a GSA formation approach and plan for the Colusa Basin.

2. Roles and Responsibilities

- a. The California Water Foundation (CWF) will fund Kearns & West, Inc. (K&W) to provide the services described in the scope, and will provide general guidance and advice to K&W and local sponsors.
- b. K&W will serve as a neutral third party to work with interested local agencies, organizations, and other stakeholders across the Colusa Basin to design and initiate a collaborative process. While K&W will communicate initially with local sponsors Glenn County and Glenn Colusa Irrigation District for efficiency, K&W expects to work on behalf of other Colusa Basin counties, local agencies, and stakeholders interested in a collaborative approach to GSA formation.
- c. Glenn County and GCID will serve as the local coordinating agencies for the project, assisting K&W in developing an initial approach and timeline, identifying and contacting local interests, and arranging facilities for local meetings.

3. Proposed Approach

As envisioned, the collaborative exploration of GSA formation would be structured around an accelerated assessment and report back, followed by two facilitated sessions with an appropriate intervening period for consultation and planning. The assessment would focus on identifying local agencies and other stakeholders, evaluating interest in a collaborative process, and identifying key interests. Session One likely would be limited to a small but diverse group of local agency representatives, and would focus on information-sharing about the SGMA and Colusa Basin, discussion of key interests, identification of key choices and decisions for governance, and expanding participation for Session Two. Participants would not be asked to make decisions; instead, they would consult internally with their organizations as necessary. Session Two would likely have a larger number of participants, including interested members of the public. The format would depend on choices about participation, discussion topics, and objectives. Participants from Session One would report on their internal consultations, identify areas where interests appear to align, and invite input from participants added for the second session. Depending on circumstances, participants potentially would make preliminary process-focused decisions about a joint approach to GSA formation.

Based on current knowledge, potential participants in Session One might include county supervisors or representatives, advisory committee members, and representatives of other local agencies including water agencies and cities. Kearns & West would consult with Session One participants about expanded participation for Session Two beyond local agency representatives, and would coordinate necessary steps to encourage expanded participation.

4. Tasks

Task 1: Assessment/Design/Convening for Initial Discussion. K&W will identify/confirm potential assessment participants in consultation with an initial working group of designated representatives from Glenn County, GCID, Colusa County, and other local agency representatives as appropriate. K&W will communicate with these participants about their willingness to participate in an initial assessment of interests related to GSA formation, a potential Session One agenda, and desired outcomes. Communications could take various forms including individual or group interviews and informal one-on-one discussions. K&W will coordinate with the working group about the results of initial communications and, as needed, make recommendations about scheduling, design, timing, and content. The working group may expand as part of planning. K&W will coordinate with sponsors for invitations and logistics.

Task 2: Session One. Based on the results of Task 1, Kearns & West will coordinate with the working group to design, plan, facilitate, and develop materials for Session One. The

content likely will build on the January 2015 GSA workshop held in Willows as well as other discussions among participants. The meeting design will assume a two-session model with the understanding that a decision about the second session will be made as part of the Session One agenda. The initial session is not anticipated to be structured as a public meeting but this option should be explored.

Meeting objectives will include:

- Review GSA formation requirements and timelines
- Present useful information about the physical condition of the Colusa Basin in order to build shared understanding
- Identify participants' key needs, interests and concerns related to SGMA implementation and specifically governance; document where interests align (and potentially diverge)
- Identify key decisions or choices needed for effective Colusa Basin groundwater governance
- Identify additional participants for Session Two
- Discuss a public meeting approach and agenda for Session Two
- Develop a preliminary "roadmap," including milestones on a timeline, potentially leading toward defining a GSA structure.

Meeting materials will be developed by Kearns & West in coordination with the working group. CWF may make available technical consultants from RMC Water and Environment for some mapping and analysis as needed.

The initial session is tentatively targeted for April 2015.

Task 3: Plan Session Two. This task would include all planning for the second session including agenda, format, logistics, and materials. Depending on decisions made at Session One, K&W will communicate with additional local agency participants and stakeholders, including independent pumpers, county Farm Bureaus, and interested members of the public, about attending Session Two. K&W will coordinate with the working group and other Session One participants to balance interests related to openness, inclusiveness, and the role of local agencies in governance under the SGMA.

Task 4: Facilitate Session Two. This task is similar in some respects, e.g., actual meeting facilitation, to Task 2. The purpose and format for this meeting will affect specific needs: adding stakeholders and members of the public, and potentially offering opportunities to comment, will add to facilitation complexity as well as planning. K&W will also prepare a meeting summary potentially for use as a public document.

Goals for the second session will depend on choices about participation, including the public. In general the focus would be:

- Provide a shared summary of Session One topics and perspectives, including technical information about the condition of the Basin. Some of this information likely would have been shared in advance.
- Review key decisions and choices related to GSA formation and governance and provide perspectives based on internal discussions. New participants would have been advised in advance and would also offer perspectives.
- Discuss options for moving forward with GSA formation and determine how these align with interests
- Confirm key information for a GSA formation “roadmap” including options to engage other interested parties
- Decide on next steps

The timing of Session Two would be May –June 2015.

5. Deliverables

- A. Summary of assessment interviews: interests, objectives
- B. Agendas, materials, facilitation plans, and meeting summaries for Sessions One and Two
- C. A “roadmap” document for GSA formation with milestones and timelines – subject to Session Two outcomes
- D. A report to CWF documenting the process and identifying “lessons learned” from the Colusa Basin experience.