

GLENN COUNTY WATER ADVISORY COMMITTEE

Glenn County Department of Agriculture
720 North Colusa St., P.O. Box 351, Willows, CA 95988
Phone: (530) 934-6501 Fax: (530) 934-6503

E-mail: wateradv@countyofglenn.net Web Page: www.glenncountywater.org

MINUTES

Meeting Date: June 10, 2014

Time: 1:30 pm

Place: Glenn-Colusa Irrigation District
344 East Laurel Street
Willows, CA 95988

Water Advisory Committee Members Present:

Larry Domenighini	Glenn County Farm Bureau
Ted Trimble	Western Canal Water District
Bruce Roundy	Resource Conservation District
David Alves	Central River Irrigation Districts
Sandy Willard-Denn	GCID
Ken Sullivan	Orland Water Users Association
Mike Vereschagin	TC Canal Authority Districts

Water Advisory Committee Members Absent:

Darin Titus	At Large Private Pumper
John Garner	At Large Private Pumper
Mike Alves	TC Canal Authority Districts
Mark Lohse	At Large Private Pumper
Rob Vlach	At Large Private Pumper

Technical Advisory Committee Members Present:

Leigh McDaniel	Glenn Co. Board of Supervisors
Anjanette Shadley Martin	East Area
Kevin Backus	Glenn Co. Environmental Health
John Brooks	North Area

Others in Attendance:

Matt Gomes	Glenn Co. Planning & Public Works
Lisa Hunter	Glenn Co. Ag Dept.
Brian Taylor	Glenn Co. Ag Dept.
Caryn Brown	Black Butte MHP
Del Reimers	
Chris Privitera	GCID
Zac Dickens	GCID
Carol Perkins	Butte Environmental Council
Barbara Hennigan	BSBAGU
Christina Buck	Butte County
Jeff Sutton	TCCA
Lester Messina	

- I. INTRODUCTIONS: Those in attendance introduced themselves.
- II. APPROVAL OF MINUTES: Draft minutes from the previous meetings on July 8, 2013 and May 6, 2014 were unanimously approved as submitted by members present.
- III. AGENDA ITEMS:
 - A. **Public Comment:** Barbara Hennigan addressed the group regarding a mapping project derived from interviews with long-term residents of the county that she believes will help to find out what the baseline for the Sacramento River used to be. She distributed her contact information for those that are interested in participating.

B. Discussion & Action Items:

1. Update on member vacancies

In May, the Board of Supervisors appointed Robert Vlach to the WAC and John Brooks to the TAC, as per the WAC's recommendation. The TAC is now fully staffed and the WAC has one remaining vacancy for the East County Reclamation and Irrigation Districts.

2. Drought Conditions Update

a) Water/irrigation district update: The various districts provided updates to their current situations. Most of the conditions remain similar from the previous month's report. Many districts along the TCCA are transferring water into their districts at high costs. County-wide, water conservation and minimum spill are being encouraged. Some common landowner transfers have occurred. No transfers have triggered the Export Water Transfer Guidelines.

b) Consider request for information-survey: A request was made to provide the WAC with information regarding the number of fallowed acres in an attempt to quantify the total number. The current estimate is that approximately 80,000 acres are fallow throughout the TCCA. A survey will be developed for dissemination to the water districts.

3. Reports

a) TAC Report: The TAC met June 3. The TAC is currently working to revise the Basin Management Objectives, and is intending to meet more frequently in an attempt to bring revisions to the WAC by the end of the year.

b) Ad Hoc Committee Report: the Ad Hoc Committee has not met since the previous WAC meeting. The Report and Action List were presented to and approved by the Board of Supervisors in May. A priority item for the upcoming meetings will be focused on the groundwater modeling efforts. The committee will tentatively meet in July.

c) Association of California Water Agencies and California Water Foundation Reports: Ms. Hunter presented a slideshow contrasting the recent ACWA and CWF reports. Though both reports were similar, there were significant distinctions concerning the definition of sustainable groundwater use, the structure of local groundwater management, and the role of the state in local management. Both reports are available online.

C. Communications: None discussed.

D. Member Reports:

There was some discussion concerning the sustainability of fixed regulatory costs imposed on landowners if the current agricultural economy were to decline, and the undesirability of adjudication to resolve local conflict. There was also some discussion of how to address gaps in local monitoring efforts, and the structure of local groundwater regulatory efforts in adjacent counties relative to the regulatory efforts in Glenn County.

IV. NEXT MEETINGS: The next WAC meeting will be scheduled at a later date. The next TAC meeting is tentatively scheduled for mid-July. The meeting was adjourned at 3:20 p.m.

**GLENN COUNTY
WATER ADVISORY COMMITTEE
TECHNICAL ADVISORY COMMITTEE
JOINT MEETING**

Glenn County Department of Agriculture
720 North Colusa St., Willows, CA 95988
Phone: (530) 934-6501 Fax: (530) 934-6503
E-Mail: wateradv@countyofglenn.net
Web Page: <http://www.glenncountywater.org/>

MINUTES

MEETING DATE: Thursday, October 23, 2014
TIME: 9:30 A.M.
PLACE: Glenn-Colusa Irrigation District
344 East Laurel Street, Willows, CA 95988

I. INTRODUCTIONS: those in attendance introduced themselves.

WAC Members Present:

David Alves	PCGID
Ted Trimble	WCWD
Sandy Willard Denn	GCID
Larry Domenighini	GCFB
Ken Sullivan	Ouwua
Bruce Roundy	GCRCD/City of Orland
Mike Vereschagin	OAWD/TCCA
Michael Alves	KWD/GWD
Rob Vlach	NRCS/At-Large Private Pumper
John Garner	At-Large Private Pumper
Mark Lohse	At-Large Private Pumper
WAC Members Absent:	
Darin Titus	At-Large Private Pumper

TAC Members Present:

Allan Fulton	UCCE
Kevin Backus	Glenn Co. Env. Health
Matt Gomes	Glenn Co. P&PWA
Lance Boyd	South Area
John Brooks	North Area
Ben Pennock	Central Area

TAC Members Absent:

Jim Donnelly	Glenn Co. Ag Dept
Leigh McDaniel	Board of Supervisors
Roy Hull	DWR
Anjanette Shadley	East Area

Others in Attendance:

Lisa Hunter	Glenn Co. Ag Dept.	Ron VonBargen	GC Assessor's office
Brian Taylor	Glenn Co. Ag Dept.	Pete Carr	City of Orland
Carol Perkins	Butte Env. Council	Eric Miller	Butte Co. TAC/MPM Engineering
Oscar Williams	self	Barbara Hennigan	BSBAGU
Will Martin	Capay Farms	Kevin Kibby	USBR
Mark Atlas		John Ayres	GEI
Doug Ross	Valley Mirror	Natalie Wolder	BOR
Michelle Dooley	DWR	Renee Thatford	Cal Water
Lisa Humphreys	GCFB	Susan Meeker	Tri-Counties Newspapers
Del Reimers		Eugene Cleek	

II. APPROVAL OF MINUTES:

Minutes were continued until the next regular meeting of the committees.

III. AGENDA ITEMS:

A. Public Comment:

Pete Carr, at the request of the Orland City Council, inquired about the possibility of adding a seat to the Water Advisory Committee to accommodate an additional member from the City of Orland.

B. Discussion and/or Action Items:

1. TAC Report - Basin Management Objective Revision Update

Lisa Hunter gave a summary of the TAC's efforts to revise the BMOs. A large portion of the discussion to this point has focused on the BMO boundary revision to more accurately reflect the hydrology. The most recent recommendations have the Colusa Basin subdivided into a number of medium to large management areas primarily following existing canal boundaries and fault lines, the Corning Basin split into two separate management areas, and the foothill basins collectively as one management area. However, additional recommendations are still being considered and a final review of the various options will be conducted at the next TAC meeting, with a finalized boundary revision recommendation to follow.

Geologic cross sections provided by DWR Northern Region and current stage alert definitions and actions are also being discussed at the TAC level.

There was a lengthy discussion on the overall BMO revision process. The WAC directed the TAC to develop procedure for responding to Abnormal Groundwater Reports and the WAC requested it receive notification/copies of any reports filed.

2. Glenn County Groundwater Level Newsletter

The most recent version of the UC Extension Center's Water & Land Management Newsletter was reviewed. The newsletter contained a historical synopsis of groundwater development in Glenn County, an update on 2014 groundwater levels and a list of suggested reading.

3. Review of 2014 Groundwater Levels

Maps from the Department of Water Resources were presented showing the changes in groundwater elevation in the Northern Sacramento Valley from 2013-14 and also from 2004-14 for shallow, two intermediate depths, and deep aquifer zones. Although there is variation from region to region, the groundwater levels in Glenn County appear to show a decline, both in the short and long term.

4. Review of 2014 Water Quality Measurements

A spreadsheet was presented showing a summary of the 2014 water quality measurements within the county. Twenty-four wells were sampled in July and August. There were two exceedances of the threshold for electrical conductivity, but no other abnormal measurements.

5. Discussion of the September 16, 2014 Board of Supervisors Meeting

The minutes of the September 16, 2014 Board of Supervisors meeting were discussed. Of particular interest to the committee was a motion to approve a recommendation by Supervisor McDaniel which would "Direct the Water Advisory Committee and the Technical Advisory Committee to intensify their efforts to bring a revised groundwater management plan to the Board of Supervisors before the 2015 irrigation season, based on new State legislation and current information available in the County."

6. Groundwater Legislation Discussion

Pertinent aspects of Assembly Bill 1739 and Senate Bills 1168 and 1319 were discussed. Handouts prepared by ACWA regarding implementation deadlines, a fact sheet, and a frequently asked questions sheet were reviewed.

7. Ad Hoc Committee Report

At the committee's recommendation, the Ad Hoc Committee was dissolved by a unanimous vote of the members present. Two new committees were formed to focus on more specific topics. One committee will focus on outreach and education, the other to summarize and to develop a plan to address the new State legislation. The outreach and education committee consists of Larry Domenighini, Sandy Denn, Allan Fulton, Mike Vereschagin, Bruce Roundy, and Ben Pennock. The legislation committee members are John Garner, Larry Domenighini, Mark Lohse, David Alves, and Anjanette Shadley.

C. Communications: None discussed

D. Member Reports

Mike Vereschagin referenced a meeting of the Ad Hoc Committee where the possibility of recharge studies performed in conjunction with UC Davis were discussed. The proposed project would consist of on-farm recharge studies in 3 different areas, with Orland-Artois Water District being one of the potential study sites. The Glenn County Board of Supervisors has written a letter in support for the project.

IV. NEXT MEETINGS:

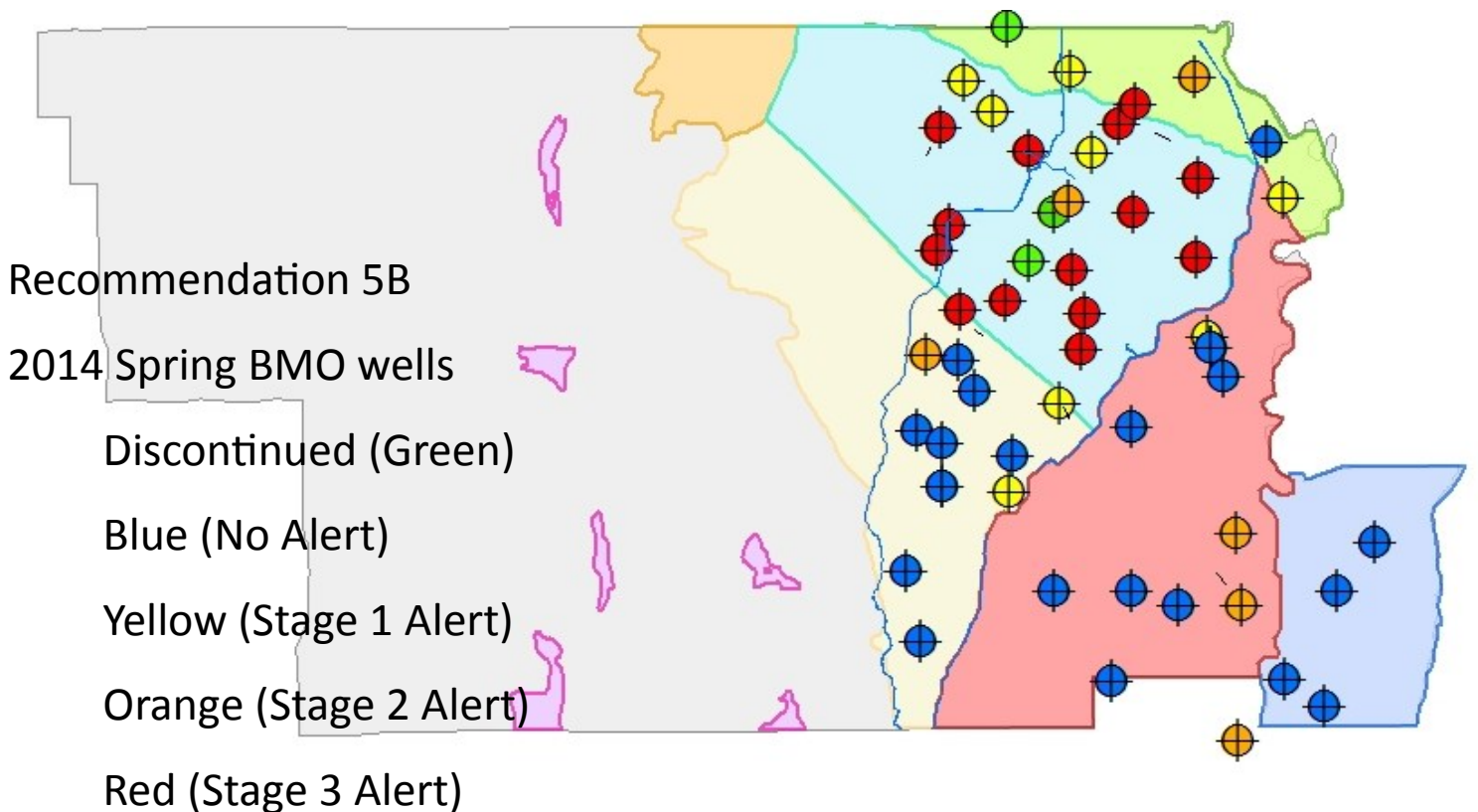
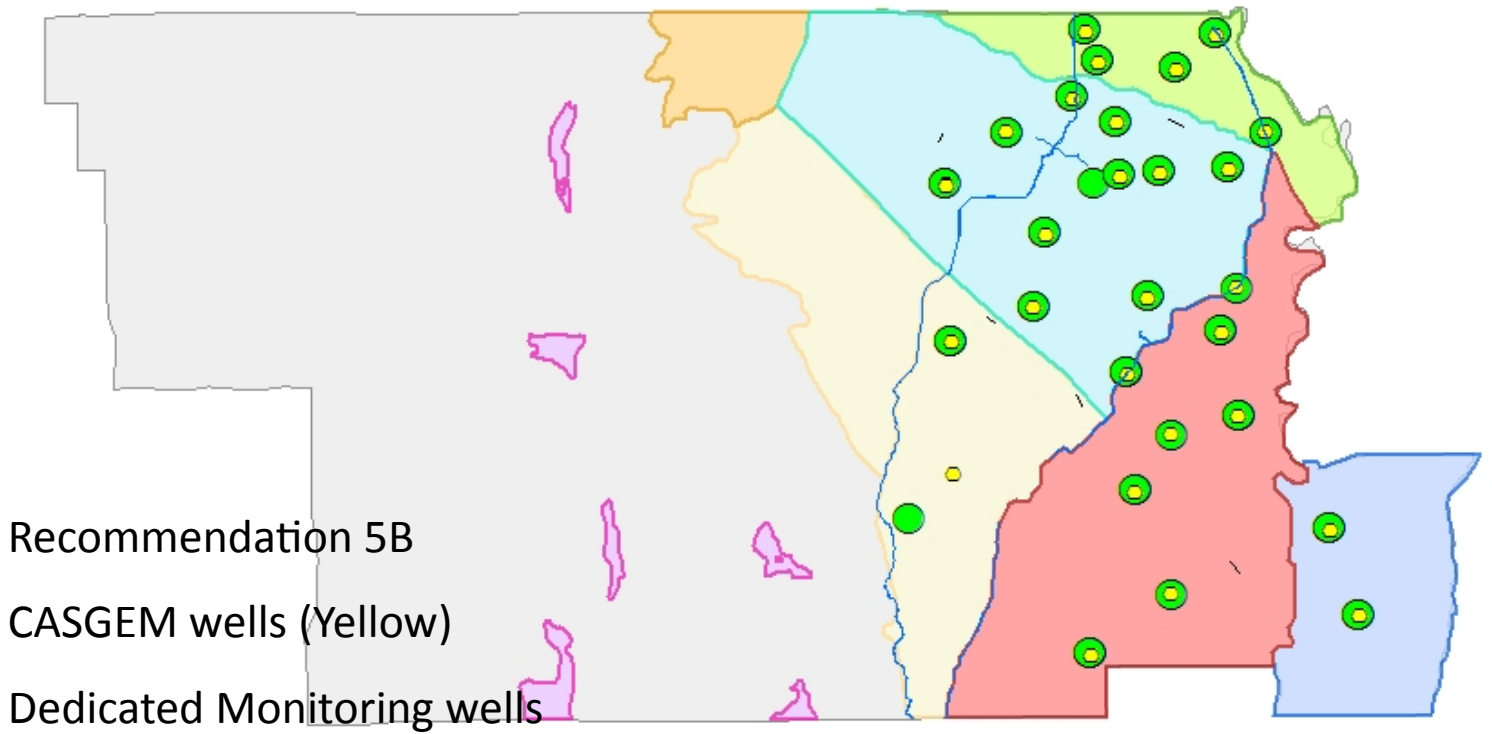
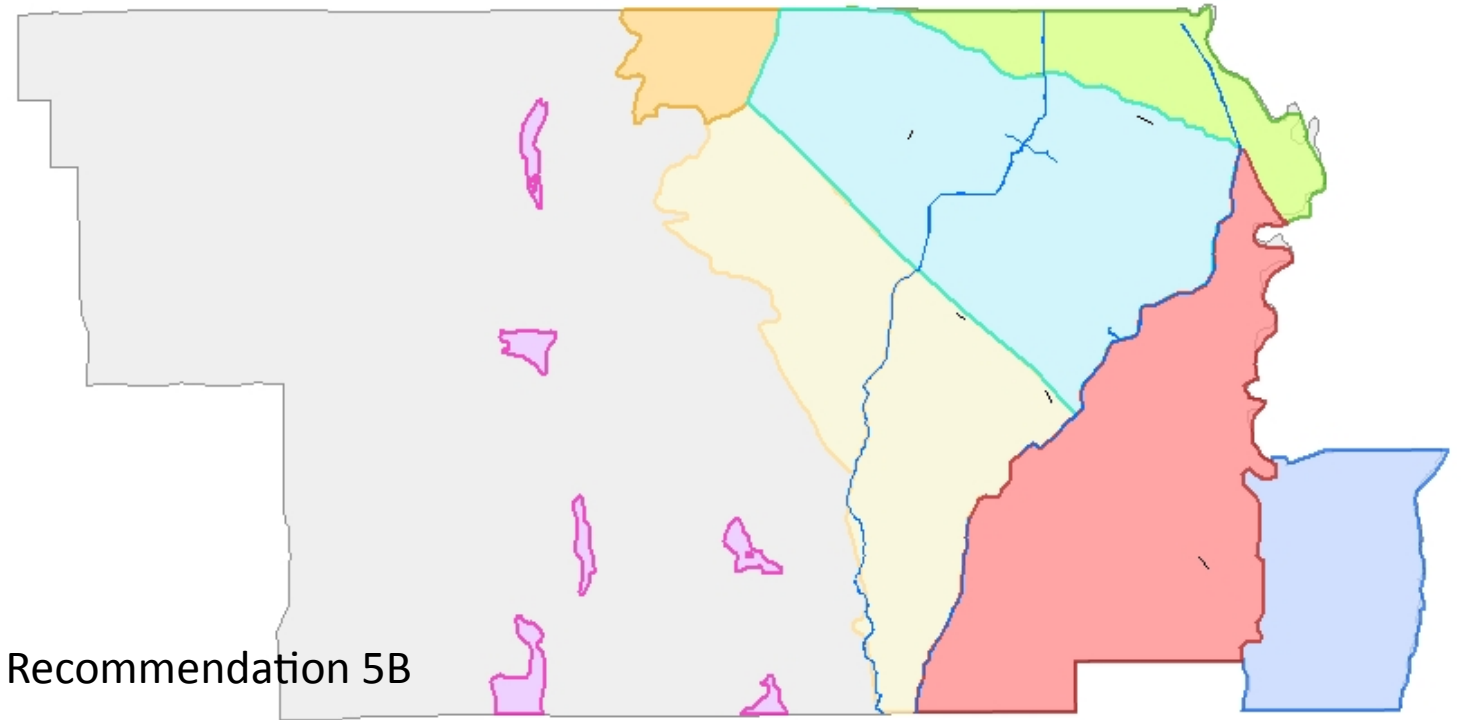
- A. The next TAC meeting is tentatively scheduled for November.
- B. The next WAC meeting is scheduled for Tuesday, December 9th.

V. ADJOURN

The meeting was adjourned at 12:02 p.m.

Final Basin Management Area

TAC Recommendation



Recommendation 5B

Corning Basin:

Orange-- Bulletin 118 boundary on the west, south, and east, County line to the north.

Green-- Bulletin 118 boundary on the west, south (Stony Creek), and east (Sacramento River), County line to the north.

Foothill Basins (Chrome Town Area, Elk Creek Area, Stony Gorge Reservoir, Squaw Flat, Stonyford Town Area, Funks Creek):

Pink-- Bulletin 118 boundaries. Group foothill basins into one management area with subareas within if needed.

West Butte Basin:

Blue (east side of river)-- Bulletin 118 boundary and County line to north and south.

Colusa Basin:

Blue (west side of river)—County line and Stony Creek (Bulletin 118 boundary) to the north, GCID canal to the east, fault line to the south, Bulletin 118 boundary to the west.

Yellow—Fault line to the north, Bulletin 118 boundary to the west, GCID canal to the east, County line to the south.

Red—GCID canal to the west, Sacramento River and Bulletin 118 boundary to the east, County line to the south.

Non-alluvial basins:

Grey-- One additional management area to cover non-alluvial basins (the rest of the County).

Outreach and Education Committee Update

WAC December 9, 2014

A decorative graphic consisting of several horizontal lines of varying lengths and colors (teal, light blue, white) extending from the right side of the slide towards the center.

Committee Meetings

- November 3, 2014
- November 18, 2014
- Next meeting tentatively set for early January 2015

Details of the outreach meetings are still being developed. The following slides provide an update on the proposed general layout for the winter outreach meetings.

Winter Outreach Meetings

- 3 meetings
 - Orland
 - Willows
 - Ord Bend
- February 2015 timeframe
- Mid-week evenings- 6:00--7:30 pm

Rangeland Association meeting will be handled separately but approximately the same timeframe– details have not yet been decided.

Outreach Meeting Topics

- Glenn County Hydrology (Allan Fulton)
- WAC Overview and Activities (Larry Domenighini)
- What the New State Groundwater Legislation Means for Glenn County (Speaker TBD)

Outreach Meeting Format

- Moderator to facilitate the meetings (not yet chosen)
- 15-20 minutes for each presenter
- Q&A
- Speakers and additional panel members available to address audience questions?
 - Vary panel members depending on location?

Other Points

- Meeting is informational for public-not a policy meeting
- Informational handouts
 - UCCE handouts
 - Water Cycle?
 - Water Budget?
 - Surface Water/Groundwater usage
- Meeting Sponsors:
 - UCCE
 - GCFB
 - WAC

Sustainable Groundwater Management Act

AB 1739, SB 1168, SB 1319

State Funding

- ***Governor's California Budget Proposal January 2014 and May 2014 revise:***
- SWRCB: 10 positions, \$1.9 Million from General Fund
 - Will act as a backstop when local or regional agencies are unable or unwilling to sustainably manage groundwater
- DWR: Technical assistance and Guidance
 - FY 2014/2015: \$2.5 Million
 - FY 2015/2016: \$5.0 Million
 - FY 2016/2017: \$5.0 Million
 - FY2017/2018: \$5.0 Million
- ***Proposition 1:*** \$100 million in funding to GSAs to develop and implement sustainable groundwater management plans.

Groundwater Legislation Package

- Concept papers
 - ACWA (Association of California Water Agencies)
 - CWF (California Water Foundation)
- Legislation
 - AB 1739 (Dickinson)
 - SB 1168 (Pavley)
 - SB 1319 (Pavley)
- Signed September 16, 2014
- Effective January 1, 2015
- 2015 Legislation?? (Pavley- SB 13, SB 20)

The Legislature finds and declares as follows:

- The people of the state have a primary interest in the protection, management, and reasonable beneficial use of the water resources of the state, both surface and underground, and that the integrated management of the state's water resources is essential to meeting its water management goals
- Failure to manage groundwater to prevent long-term overdraft infringes on groundwater rights.
- Groundwater resources are most effectively managed at the local or regional level.
- Groundwater management will not be effective unless local actions to sustainably manage groundwater basins and subbasins are taken.
- Local and regional agencies need to have the necessary support and authority to manage groundwater sustainably.

Consideration of All Interests of All Beneficial Uses and Users of Groundwater

- Holders of overlying groundwater rights, including:
 - Agricultural users.
 - Domestic well owners.
- Municipal well operators.
- Public water systems.
- Local land use planning agencies.
- Environmental users of groundwater.
- Surface water users, if there is a hydrologic connection between surface and groundwater bodies.
- The federal government, including, but not limited to, the military and managers of federal lands.
- California Native American tribes.
- Disadvantaged communities, including, but not limited to, those served by private domestic wells or small community water systems.

Definitions

- “Sustainable groundwater management” means the management and use of groundwater in a manner that can be maintained during the planning and implementation horizon without causing undesirable results.
- “Sustainable yield” means the maximum quantity of water, calculated over a base period representative of long-term conditions in the basin and including any temporary surplus, that can be withdrawn annually from a groundwater supply without causing an undesirable result.

“Undesirable result” means one or more of the following effects caused by groundwater conditions occurring throughout the basin:

- **Chronic lowering of groundwater levels** indicating a significant and unreasonable depletion of supply if continued over the planning and implementation horizon. Overdraft during a period of drought is not sufficient to establish a chronic lowering of groundwater levels if extractions and recharge are managed as necessary to ensure that reductions in groundwater levels or storage during a period of drought are offset by increases in groundwater levels or storage during other periods.
- Significant and unreasonable **reduction of groundwater storage**.
- Significant and unreasonable **seawater intrusion**.
- Significant and unreasonable **degraded water quality**, including the migration of contaminant plumes that impair water supplies.
- Significant and unreasonable **land subsidence** that substantially interferes with surface land uses.
- Depletions of interconnected surface water that have **significant and unreasonable adverse impacts on beneficial uses of the surface water**.

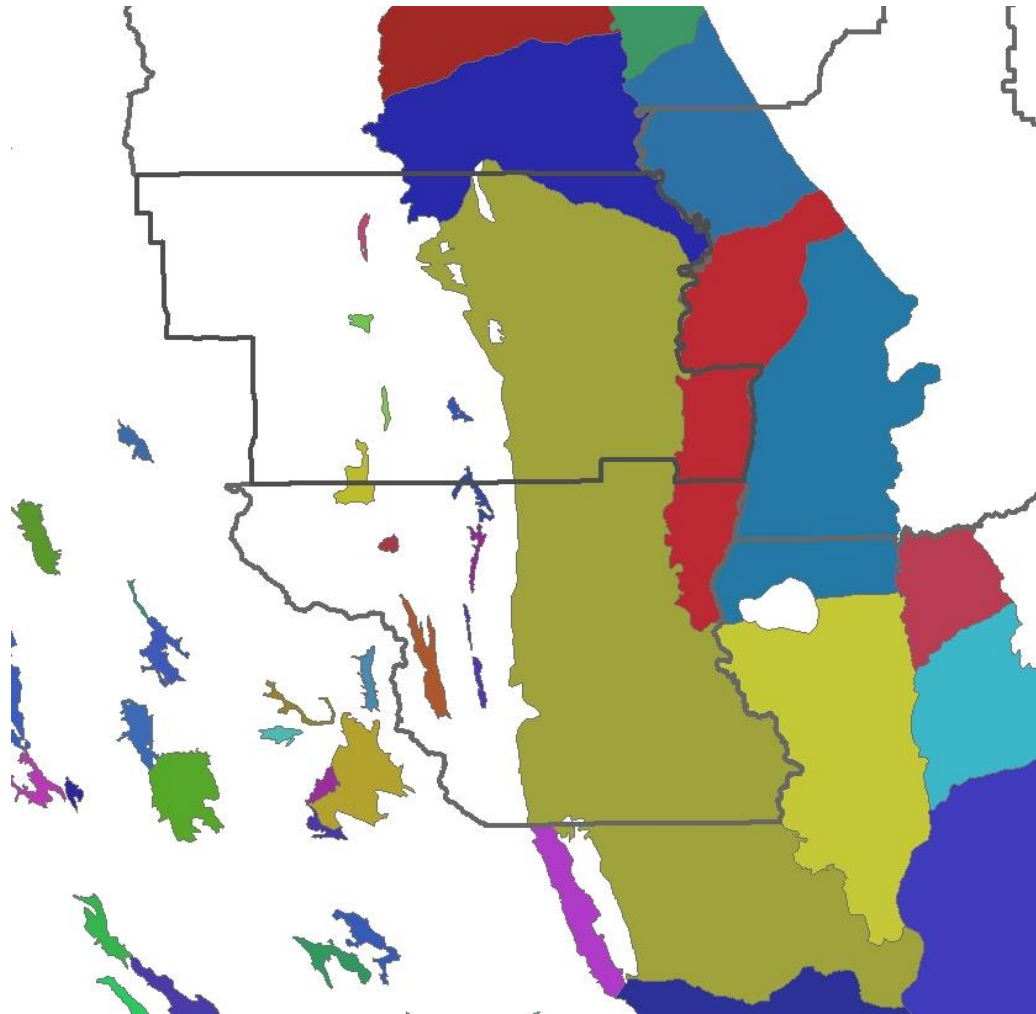
Implementation Timeline

- **Jan 31, 2015:** Prioritization of groundwater basins by DWR
- **Jan 1, 2016:** DWR adopts regulations to revise basin boundaries
- **Jun 1, 2016:** DWR adopts regulations for Groundwater Sustainability Plans (GSP)
- **Dec 31, 2016:** DWR publishes report on water available to replenish groundwater
- **Jan 1, 2017:** DWR publishes BMPs for groundwater sustainability
- **Jun 30 2017:** Formation of Groundwater Sustainability Agencies (GSA)
- **Jul 1, 2017:** State Water Board may designate basin as probationary
- **Jan 31, 2020:** GSPs are adopted & beginning implementation in critical basins
- **Jan 31, 2022:** GSPs are adopted & beginning implementation in high and medium basins

Groundwater Basins and Basin Boundary Revisions

- Jan 31, 2015: DWR updates basin priorities
- Jan 1, 2016: DWR adopts regulations to revise basin boundaries
- A local agency may request that DWR revise the boundaries of a basin, including the establishment of new subbasins. Request shall be supported by the following information:
 - (1) Information demonstrating that the proposed adjusted basin can be the subject of sustainable groundwater management.
 - (2) Technical information regarding the boundaries of, and conditions in, the proposed adjusted basin.
 - (3) Information demonstrating that the entity proposing the basin boundary adjustment consulted with interested local agencies and public water systems in the affected basins before filing the proposal with the department.
 - (4) Other information the department deems necessary to justify revision of the basin's boundary.
- DWR may revise basin boundaries upon own investigation

Groundwater Basins

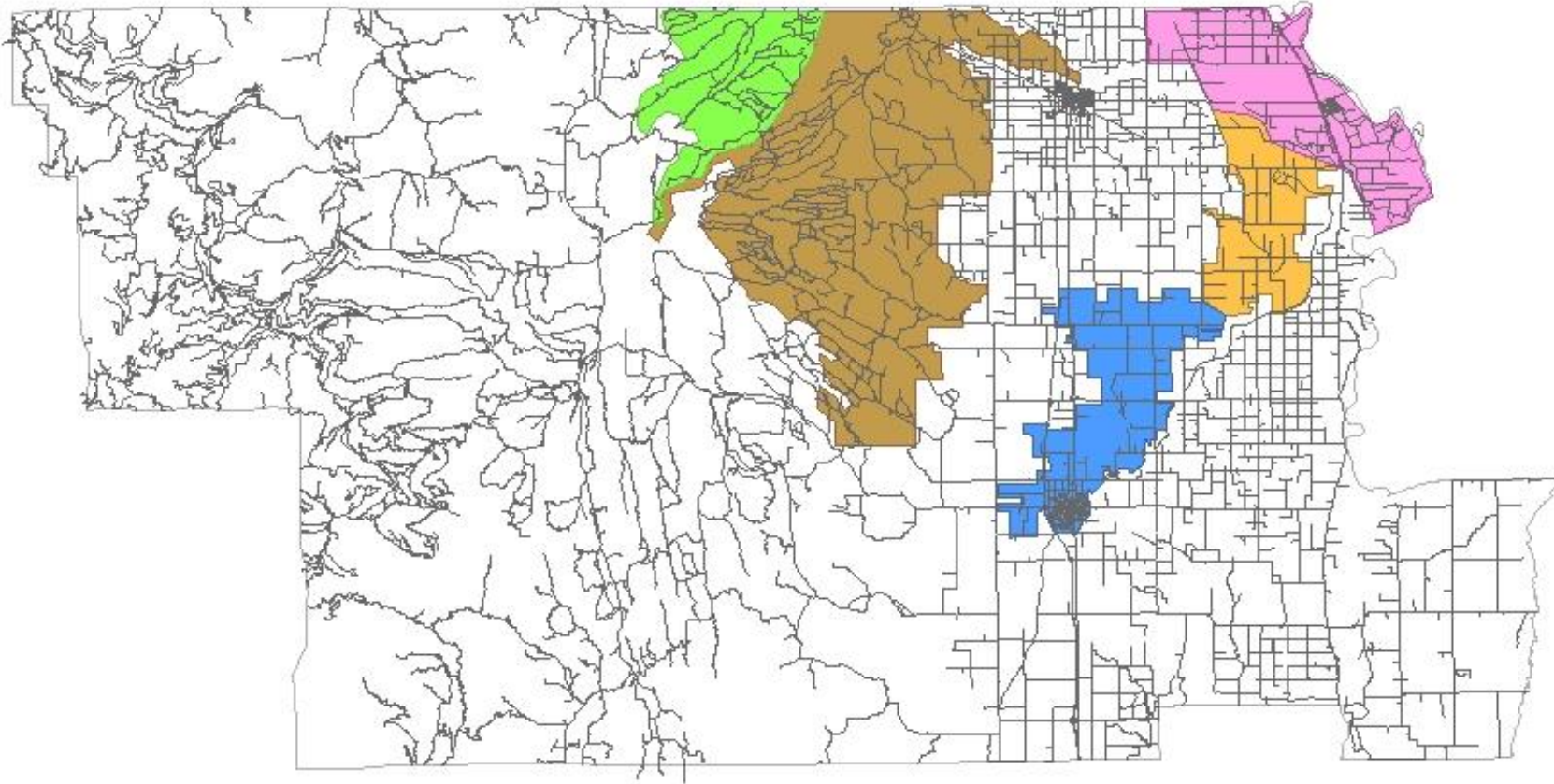


Groundwater Sustainability Agency Setup

(Due June 30, 2017)

- Any local agency or combination of local agencies overlying a groundwater basin may elect to be a GSA for that basin.
- A combination of local agencies may form a GSA by using any of the following methods:
 - A joint powers agreement.
 - A memorandum of agreement or other legal agreement.
 - Water Corporations regulated by PUC may participate if local agencies approve (Cal Water-Willows, Hamilton City)
- Any area within a basin that is not within the management area of a GSA, the county will be presumed to be the GSA for that area.

Presumed County Managed Areas



Powers and Authorities of GSAs

- Develop/manage Groundwater Sustainability Plan (GSP)
- Conduct investigations/studies
- Water management projects
- Well registration and regulation (pumping limits)
- Well metering and reporting
 - De Minimis exemption
- Well permitting restrictions (spacing)
- Fees
- Enforcement

GSA Authorities

- Appropriate and acquire surface water or groundwater and surface water or groundwater rights, import surface water or groundwater into the agency
 - Agency shall not alter another person's or agency's existing groundwater conjunctive use or storage program except upon a finding that the conjunctive use or storage program interferes with implementation of the agency's groundwater sustainability plan.
- Provide for a program of voluntary fallowing of agricultural lands or validate an existing program.
- Purchase, transfer, deliver, or exchange water or water rights.
 - providing surface water in exchange for a groundwater extractor's agreement to reduce or cease groundwater extractions

GSA Authorities: Wells

- May require registration of a groundwater extraction facility
- Use of every groundwater extraction facility be measured by a water-measuring device
- All costs associated with the purchase, installation, and maintenance of the water-measuring device shall be borne by the owner or operator of each groundwater extraction facility.
- Owner or operator file an annual statement with the groundwater sustainability agency setting forth the total extraction
- Does not apply to de minimis extractors (a person who extracts, for domestic purposes, two acre-feet or less per year).

GSA Authorities: Wells

- Impose spacing requirements on new groundwater well construction to minimize well interference and impose reasonable operating regulations on existing groundwater wells to minimize well interference, including requiring extractors to operate on a rotation basis.
- Control groundwater extractions by regulating, limiting, or suspending extractions from individual groundwater wells or extractions from groundwater wells in the aggregate, construction of new groundwater wells, enlargement of existing groundwater wells, or reactivation of abandoned groundwater wells, or otherwise establishing groundwater extraction allocations.
- A limitation on extractions by a groundwater sustainability agency shall not be construed to be a final determination of rights to extract groundwater from the basin or any portion of the basin.

GSA Authorities: Wells

- Authorize temporary and permanent transfers of groundwater extraction allocations within the agency's boundaries, The transfer is subject to applicable city and county ordinances.
- Establish accounting rules to allow unused groundwater extraction allocations issued by the agency to be carried over from one year to another and voluntarily transferred.
- GSA may not issue permits for the construction, modification, or abandonment of groundwater wells, except as authorized by a county with authority to issue those permits.

GSA Authorities: Fees and Enforcement

- A GSA may impose fees, including, but not limited to, permit fees and fees on groundwater extraction or other regulated activity, to fund the costs of a groundwater sustainability program.
- Not subject to Prop 218
- Can impose Civil Penalties.
- May bring an action in the superior court.

GSA Authorities: Limitations

- Nothing in a groundwater sustainability plan shall be interpreted as superseding the land use authority of cities and counties, including the city or county general plan, within the overlying basin.
- A groundwater sustainability plan shall take into account the most recent planning assumptions stated in local general plans of jurisdictions overlying the basin.
- Not authorized to make a binding determination of the water rights of any person or entity.

Planning Coordination between Agencies

- City/County General Plan updates: Notify
 - A federal agency, if its operations or lands within its jurisdiction may be significantly affected by the proposed action, as determined by the planning agency.
 - A public water system with 3,000 or more service connections, that serves water to customers within the area covered by the proposal.
 - Any GSA that has adopted a groundwater sustainability plan or local agency that otherwise manages groundwater pursuant to other provisions of law or a court order, judgment, or decree within the planning area of the proposed general plan.
 - The SWRCB if it has adopted an interim plan that includes territory within the planning area of the proposed general plan.
 - The Central Valley Flood Protection Board for a proposed action within the boundaries of the Sacramento and San Joaquin Drainage District.
- Public Water Agencies/GSAs
 - Send information to Planning Agencies

Groundwater Sustainability Plans (GSP)

- Types of GSPs
 - 1 Plan/1 GSA
 - 1 Plan/Multiple GSAs
 - Multiple Plans/Multiple GSAs
 - coordination agreement
- GSP must cover entire basin
- Alternative Process-Submit alternative proposal to DWR by June 30, 2017
- 20 year plan to sustainability (5 year milestones)

GSP Components (Due Jan 2020/2022)

- Required Elements: Information and reporting
- Measurable objectives to achieve sustainability goals (20 years)
- Monitoring and management program
- Other Components include-
 - Saline intrusion
 - Wellhead and recharge protections
 - Well abandonment/destruction
 - Groundwater replenishment
 - Conjunctive use/underground storage
 - Impacts on groundwater dependent ecosystems.

State Evaluation and Assessment

- June 1, 2016: DWR adopts regulations for evaluating and implementing GSPs and coordination agreements.
- GSA submits the groundwater sustainability plan to DWR for review
- If GSAs develop multiple GSPs for a basin, the submission shall not occur until the entire basin is covered by GSPs. When the entire basin is covered by groundwater sustainability plans, the GSAs shall jointly submit.
- DWR reviews GSPs every 5 years.
- GSA(s) may propose alternative plan for DWR approval.

By January 1, 2016, DWR shall adopt regulations regarding the information required

- Methodology and criteria established shall address all of the following:
 - (1) How to assess the likelihood that the proposed basin can be sustainably managed.
 - (2) How to assess whether the proposed basin would limit the sustainable management of adjacent basins.
 - (3) How to assess whether there is a history of sustainable management of groundwater levels in the proposed basin.

State Intervention: Probationary Basins

- Basin is deemed Probationary if
 - **June 30, 2017:** No GSA formed
 - **January 31, 2020 (or 2022):** No GSP submitted or plan deemed inadequate
 - **January 31, 2022:** DWR and SWRCB determine GSP is inadequate or not being implemented correctly and basin is in long term overdraft
 - **January 31, 2025:** : DWR and SWRCB determine GSP is inadequate or not being implemented correctly and interconnected surface waters being depleted

State Intervention: Interim Plans

- The interim plan shall include all of the following:
 - Identification of actions necessary to correct a condition of long-term overdraft or a condition where groundwater extractions result in significant depletions of interconnected surface waters.
 - A time schedule for the actions to be taken.
 - A description of the monitoring to be undertaken to determine effectiveness of the plan.
- The interim plan may include the following:
 - Restrictions on groundwater extraction.
 - A physical solution.
 - Principles and guidelines for the administration of rights to surface waters that are connected to the basin.
 - Fees

October 27, 2014

From: H. N. Wallace

8101 Co. Rd. 30, Glenn, CA 95943 hwallace8101@gmail.com

O. Williams

8093 Co. Rd. 31, Glenn, CA 95943 ojfarms84@gmail.com



To: Thaddeus Bettner

Glenn Colusa Irrigation District

P. O. Box 150

Willows, CA 95988

cc: L. McDaniels, Glenn County Board of Supervisors

WAC/TAC Committee, Glenn County

Tim Crews

Subj: written comments regarding the scoping meeting of GCID's "Groundwater Supplemental Supply Project, submission of

From the NOP Scoping meeting held at Ord Hall on October 7, 2014, we learned that the Supplemental Supply Project involves:

- 1) Use of five existing wells to pump ground water into the main canal
- 2) Drilling five new wells to pump ground water into the main canal
- 3) The total amount of water extracted is planned to be 28,500 acre feet per year
- 4) That pumping would occur only during dry and critically dry years and that this pumping would be monitored

In response to said project plan, the following questions are submitted:

- 1) Given that no current hydrologic/water basin study exists to be able to suggest the total impact of the projected water extraction on existing groundwater supplies in eastern Glenn County, what plans are being considered to mitigate the possible impacts in eastern Glenn County of this water extraction?
- 2) Given that BuRec is currently writing the "Long-Term Water Transfers Environmental Impact Statement/Environmental Impact Report" (Chico Enterprise Record, October 23, 2014) calling for 511,000 acre feet of water annually in dry years (360,000 acre feet in other years) from the Sacramento Valley, what are GCID's plans to enter into water transfer deals that are to be part of BuRec's forthcoming EIR? Will BuRec's EIR (which will probably include transfers from GCID) mean that GCID water extraction be done every year in eastern Glenn County, as "dry" and "critically dry" years become the norm?
- 3) Given that extracted water would be for in-district use only and since the District extends into Colusa County, extracting ground water from eastern Glenn County means that this

water will be sent out of any local basin and out of Glenn County. One of the stated goals of drilling these wells is to “protect agricultural production” – however, there is a very real potential of adversely affecting agricultural production in eastern Glenn County.

- 4) Who will determine when the extraction of groundwater will occur during the 8.5 month pumping season? How will these pumping operations be monitored – what will be measured/monitored? Will depth to groundwater in the areas close to pumping operations be monitored?
- 5) Has any consideration been given to the possibility of ground subsidence resulting from extracting 28,500 acre feet per year from a relatively small geographic area?
- 6) Without a current hydrologic study, how can anyone be certain groundwater recharge will occur?
- 7) With respect to existing and potential future wells:
 - a) How deep are existing wells?
 - b) How deep will potential future wells be?
 - c) Which aquifers are being/will be drawn from?
- 8) If landowners in eastern Glenn County suffer losses of domestic or agricultural wells (and agricultural production) due to the extraction of 28,000 acre feet of water per year, are there plans to compensate for these losses?
- 9) How much water is currently being pumped into the GCID canal by private landowners? What are GCID’s plans for these existing (or possibly future) private sources (decreased use, increased use, remain the same)?
- 10) How, and for what purpose, were the first five wells funded? How will the second set of five wells be funded? Is there the possibility that the financial strength/standing of GCID will be adversely impacted by making these expenditures?