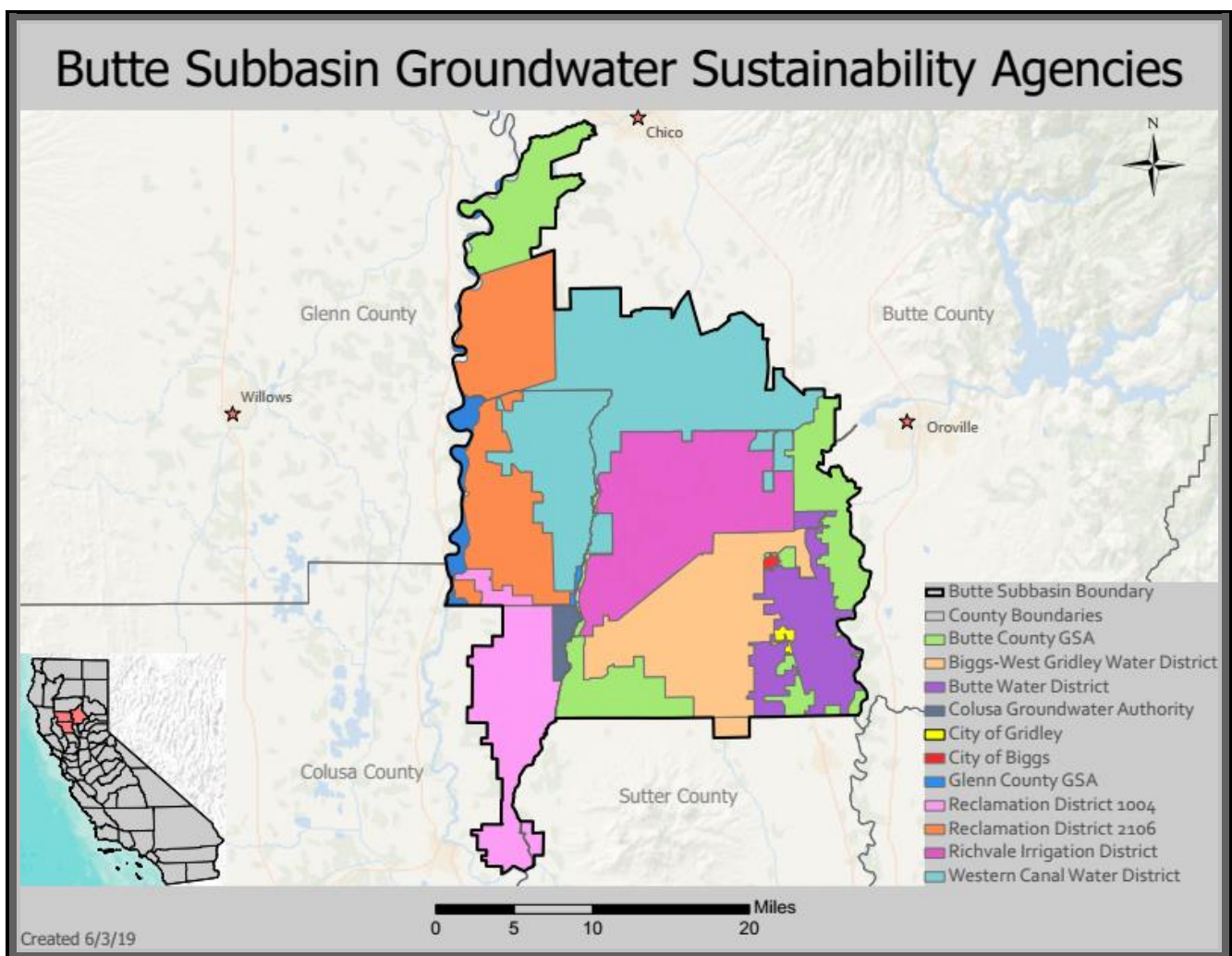


Glenn County: Butte Subbasin

WHAT IS SGMA?

The Sustainable Groundwater Management Act (SGMA) passed in the fall of 2014 establishing a new structure for managing groundwater resources in California. The Department of Water Resources defines groundwater basins and subbasins and assigns a priority designation in relation to SGMA (High, Medium, Low, Very Low). High and Medium priority basins are required to be managed under SGMA by a Groundwater Sustainability Agency (GSA) or the State Water Resources Control Board. GSAs have the opportunity to manage groundwater at the local level by developing and implementing a Groundwater Sustainability Plan by 2022 and ensuring sustainable conditions by 2042 while avoiding six distinct undesirable results. If GSAs are not successful locally, the State Water Resources Control Board will intervene and assume responsibility for basin management. Glenn County has local GSA coverage and is currently compliant with SGMA.



The Butte Subbasin is a portion of the larger Sacramento Valley Groundwater Basin covering approximately 265,500 acres. The subbasin spans Butte, Colusa, Glenn and Sutter Counties and is generally bounded on the north by the Butte County GSA/Western Canal Water District boundary, on the west by the Sacramento River and the western boundary of Reclamation District 1004, on the south by the Butte-Sutter County line, Biggs West Gridley Water District, and Reclamation District 1004, and on the east by the Butte County GSA/Feather River boundary. The GSA boundaries within the Butte Subbasin are shown above.

GROUNDWATER SUSTAINABILITY AGENCIES IN THE BUTTE SUBBASIN:

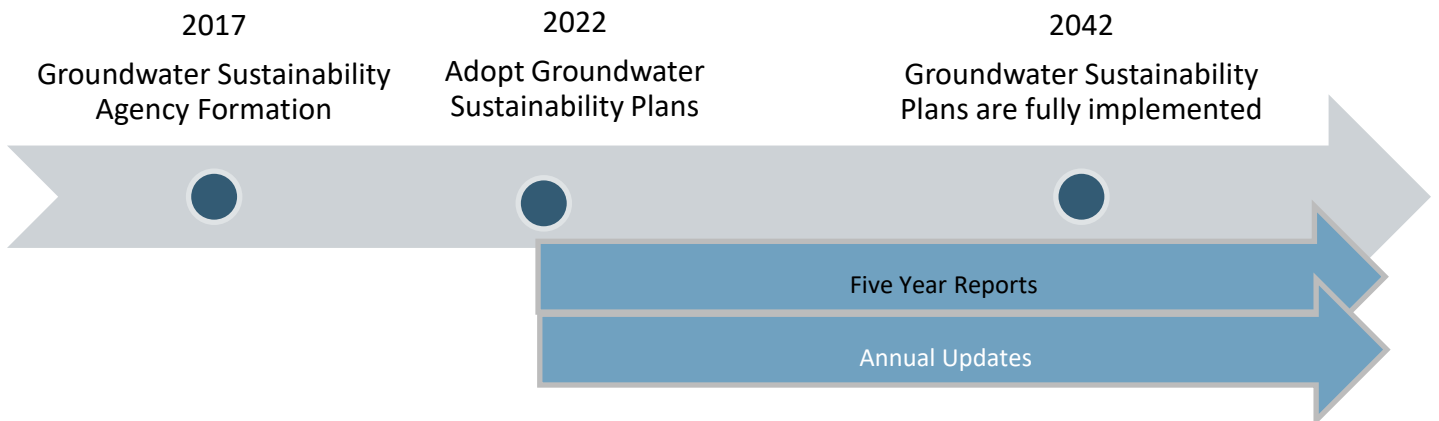
- Biggs-West Gridley Water District
- Butte County GSA
- Butte Water District
- City of Biggs
- City of Gridley
- Colusa Groundwater Authority
- Glenn County GSA
- Reclamation District 1004
- Reclamation District 2106
- Richvale Irrigation District
- Western Canal Water District

The GSAs in the Butte Subbasin elected to maintain independent jurisdictional boundaries and intend to submit one Groundwater Sustainability Plan. A Cooperation Agreement Among Groundwater Sustainability Agencies in the Butte Subbasin has been signed by all the agencies. A Butte Subbasin Advisory Board was formed through the Agreement and will provide a venue for agency coordination and public participation.

GROUNDWATER SUSTAINABILITY AGENCIES IN GLENN COUNTY:

- Glenn County GSA
- Reclamation District 1004
- Reclamation District 2106
- Western Canal Water District

SGMA TIMELINE



WAYS TO GET INVOLVED

- Register on the Glenn County Interested Parties Email List to receive meeting notifications and updates: glennsgma@countyofglenn.net
- Visit the Water Resources SGMA website for all subbasin information: <https://www.countyofglenn.net/dept/agriculture/water-resources/sustainable-groundwater-management-act-sgma-0>
- Contact Glenn County Water Resources Program Staff:
Glenn County Department of Agriculture
720 North Colusa Street
PO Box 351
Willows, CA 95988
530-934-6501
Lisa Hunter
lhunter@countyofglenn.net
Sharla Stockton
sstockton@countyofglenn.net