

Rapid Response Presentation



PURPOSE

- Provide information on unemployment benefits and programs.
- Discuss employment and training assistance programs.
- Connect to other federal, state, and local resources.

About Unemployment

- Paid for by your employer.
- Provides temporary partial-income replacement when you are unemployed or have had your hours reduced due to no fault of your own and all weekly eligibility requirements are met:
 - Physically able to work
 - Available to work
 - Actively seeking work



About Unemployment (cont.)

- Pays \$40 to \$450 per week based on your highest quarterly earnings during the base period.
- Provides up to 26 weeks of benefit payments.
- An unemployment claim is valid for one year.
- There is a seven-day mandatory, unpaid waiting period.
- Begins the Sunday of the week you file.



Unemployment Benefit Calculator

- The unemployment benefit calculator is a helpful tool that will give you an estimate of your weekly benefit amount, which can range from \$40 to \$450 per week.
- edd.ca.gov/en/Unemployment/UI-Calculator



Ways to Apply for Unemployment



Online (recommended)

- edd.ca.gov/en/unemployment/ui_online

Fax or Mail

- Complete, sign, and fax or mail the paper *UI Application* (DE 1101i) as directed on the form.
- For more secure processing, fax your application to the EDD.

Phone

- **English and Spanish:** 1-800-300-5616
- **Mandarin:** 1-866-303-0706
- **Armenian:** 1-855-528-1518
- **Tagalog:** 1-866-395-1513
- **Cantonese:** 1-800-547-3506
- **Vietnamese:** 1-800-547-2058
- **Korean:** 1-844-660-0877
- **TTY:** 1-800-815-9387
- **California Relay Service (711):** Provide the UI number (1-800-300-5616) to the operator

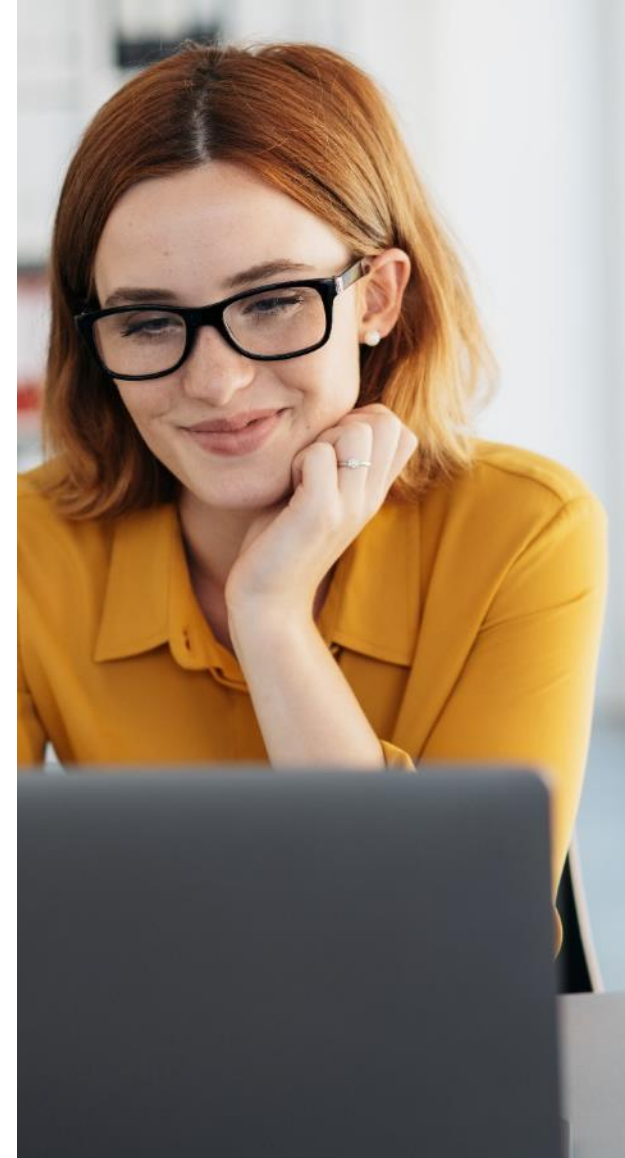


Information You Will Need

- Personal
- Last employer
- Employment history
- Identity documents

After You Submit Your Application

- Allow 7 to 10 days for processing.
- We will mail you important information about your claim and the program within 5 to 10 days.
- Read through everything we mail you and respond to us on time to avoid delays.
- We send you the first *Continued Claim Form* (DE 4581) by mail for you to certify for benefits.
- Be sure to certify for benefits every two weeks.





Certify for Benefits

- To get paid, you must answer eligibility questions every two weeks. This process is known as ***certifying for benefits***.
- **There are three ways to certify:**
 - UI Online (recommended)
 - EDD Tele-Cert 1-866-333-4606
 - By Mail

Debit Card

- When your first payment is authorized, Money Network will mail you a debit card.
- We issue unemployment, disability, and Paid Family Leave benefits using a visa debit card.
- The debit card is valid for three years. You will not receive a new card if you already received one from a previous claim.
- You can set up alerts when a deposit is available or there is a low balance.
- To request a replacement card, report a lost or stolen card, or for questions call Money Network EDD Debit Card Customer Service at 1-800-684-7051, or visit <https://www.moneynetwork.com/edd>.



California Training Benefits (CTB)



- You can receive unemployment benefits while you continue your education, upgrade your skills, or learn a new trade by going to an approved training or program.
- If eligible for CTB:
 - You will not need to be available for work, accept suitable work, or actively seek work.
 - You may qualify for a training extension for up to 26 more weeks of benefits.
 - If you're interested in the program, you must notify the us prior to receiving your 16th week of benefits.
- Learn more at edd.ca.gov/CTB.

Note:

- We do not cover any educational or training-related expenses such as tuition, books, supplies, transportation or fees. There may be state, federal, or employer programs that provide funding or financial assistance.

America's Job Center of CaliforniaSM

- The America's Job Center of California (AJCC) offers a variety of services that bring employers with job openings and qualified job seekers together at no cost.
- There are several types of services available at an AJCC:
 - Workforce Innovation and Opportunity Act (WIOA).
 - Trade Adjustment Assistance (TAA) program information.



America's Job Center of California

- Career planning.
- Skills assessment.
- Workshops.
- Labor market information.
- Job fairs and other job matching services.
- Marketing workers to area employers.
- Occupational training.



America's Job Center of California

- Special services for veterans and youth.
- Job clubs.
- Employer recruitments.
- Training and other resources.
- CalJOBSSM: **caljobs.ca.gov**
 - Access to thousands of job openings statewide.
 - Access 24 hours a day, 7 days a week.
 - No fee to use.



careeronestop.org



your source for career exploration, training & jobs

Sponsored by the U.S. Department of Labor. A proud partner of the [americanjobcenter](#) network.

 [Español](#)

Search CareerOneStop 

[Explore Careers](#) ▼ [Find Training](#) ▼ [Job Search](#) ▼ [Find Local Help](#) ▼ [Toolkit](#) ▼ [Resources For](#) ▼



▲
[COVID-19
Unemployment
Insurance Info](#)

▲
[Explore Careers](#)

▲
[Find Training](#)

▲
[Find Local Help](#)

EDD Employment
Development
Department
State of California



Labor Market Information Division

- The Labor Market Information Division (LMID) regularly collects, analyzes, and publishes information about California's labor market.
 - Also provides economic development and planning information.
- Types of information available:
 - Occupational profiles and occupation comparisons.
 - Projections of employment for occupations and industries by county.
 - Growth and decline industries in all counties in California.
- Find additional information on the EDD website:
labormarketinfo.edd.ca.gov



State Disability Insurance Program



- Disability Insurance (DI) is a partial wage replacement for eligible California workers.
- Paid Family Leave.
- Cannot collect DI at the same time as UI.
- Find additional information on the EDD website:
edd.ca.gov/disability


Covered California

- No cost service that connects Californians with brand-name health insurance.
- Financial help when you buy health insurance from well-known companies.
- May qualify for a discount on a health plan or get insurance through Medi-Cal.





coveredca.com

 [Get Started](#) [Health](#) [Dental](#) [Vision](#) [Support](#) [Sign In](#) [Shop and Compare](#)



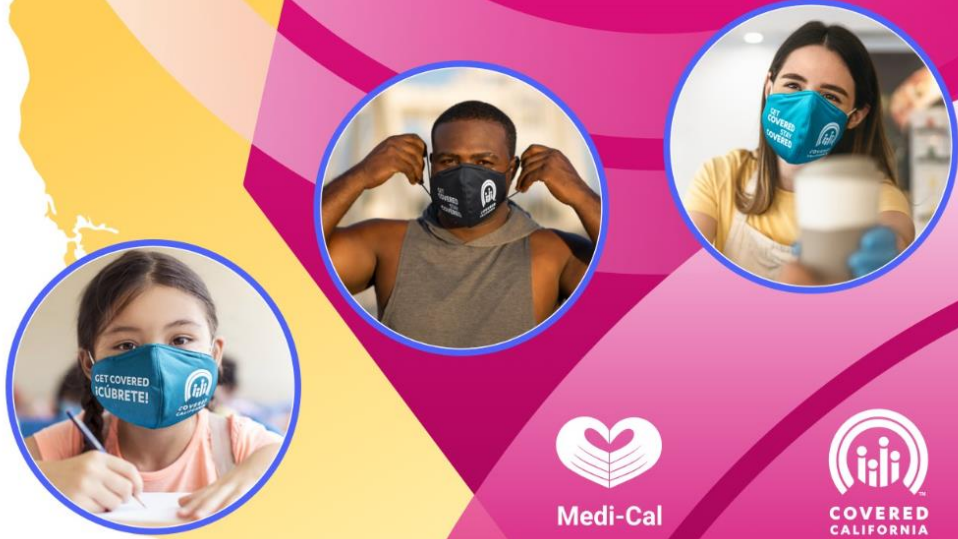
Big savings coming.

The American Rescue Plan will provide new financial help to millions.
[Learn more](#) →

Need insurance? Enrollment is still open.

[Apply](#)

[Get Started](#)



Medi-Cal

COVERED CALIFORNIA

US Department of Labor

- Consolidated Omnibus Budget Reconciliation Act (COBRA).
- Health Insurance Portability and Accountability Act (HIPPA).
- Employee Retirement Income Security Act (ERISA).
- Affordable Care Act (ACA).
- Find additional information on the DOL website: **dol.gov**.
- US Department of Labor's Employment Benefits Security Administration: **1-866-444-3272**.



Questions?

The EDD is an equal opportunity employer/program. Auxiliary aids and services are available upon request to individuals with disabilities.



**Optional: Insert partner or local
resource information**