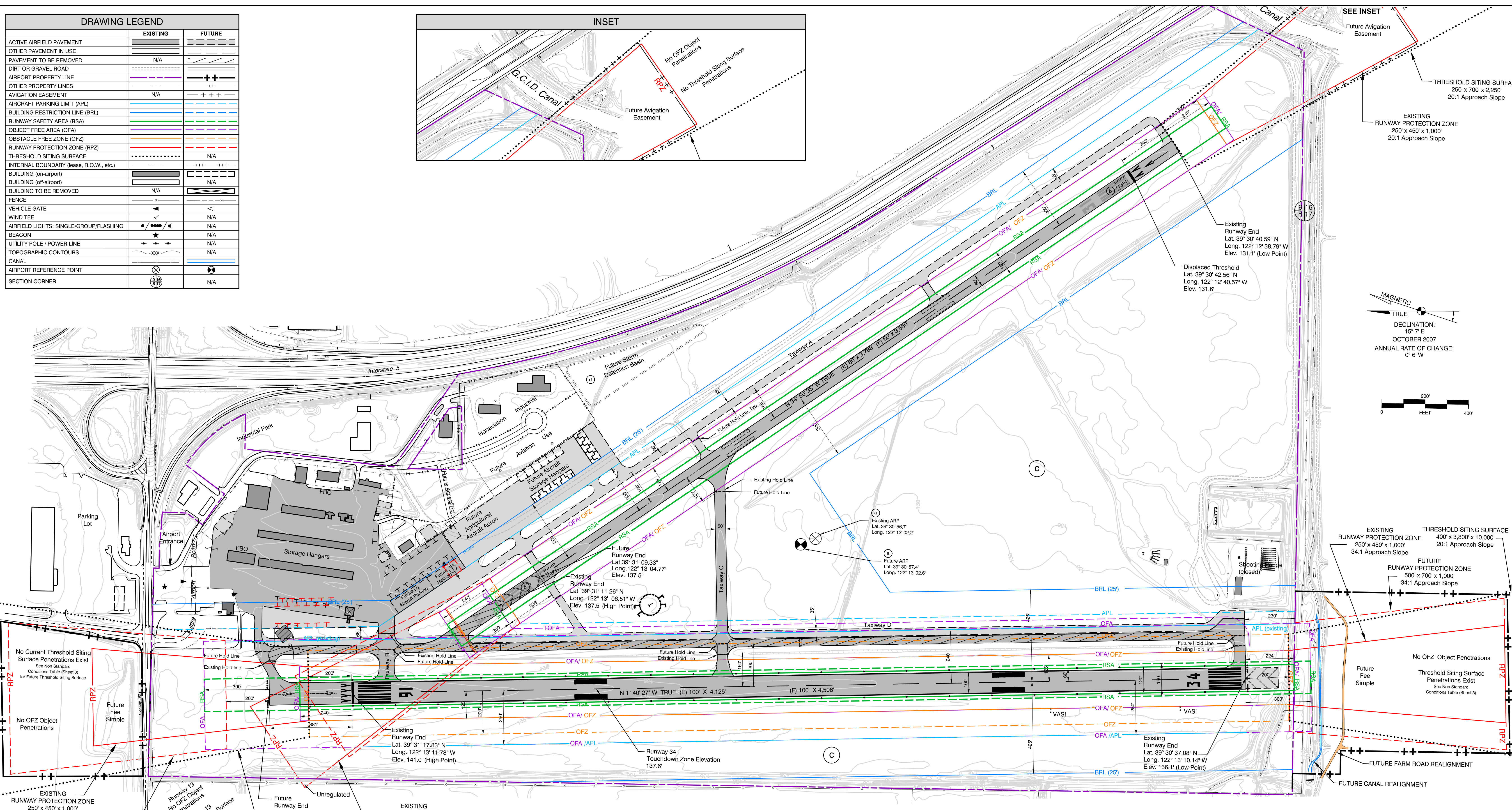
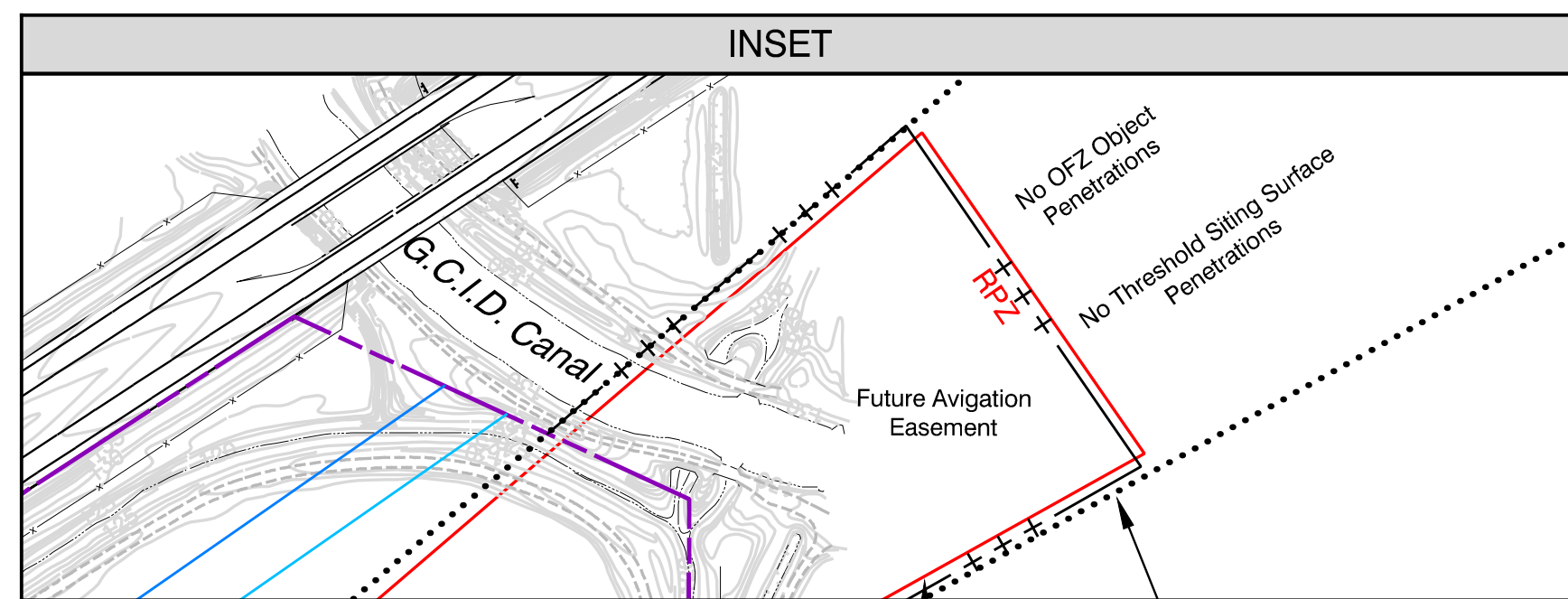
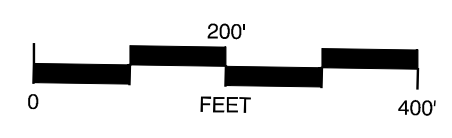


DRAWING LEGEND	EXISTING	FUTURE
ACTIVE AIRFIELD PAVEMENT		
OTHER PAVEMENT IN USE		
PAVEMENT TO BE REMOVED	N/A	
DIRT OR GRAVEL ROAD		
AIRPORT PROPERTY LINE		
OTHER PROPERTY LINES		
AVIGATION EASEMENT	N/A	
AIRCRAFT PARKING LIMIT (APL)		
BUILDING RESTRICTION LINE (BRL)		
RUNWAY SAFETY AREA (RSA)		
OBJECT FREE AREA (OFA)		
OBSTACLE FREE ZONE (OFZ)		
RUNWAY PROTECTION ZONE (RPZ)		
THRESHOLD SITING SURFACE		N/A
INTERNAL BOUNDARY (lease, R.O.W., etc.)		
BUILDING (on-airport)		N/A
BUILDING (off-airport)		N/A
BUILDING TO BE REMOVED	N/A	
FENCE		
VEHICLE GATE		
WIND TEE		N/A
AIRFIELD LIGHTS: SINGLE/GROUP/FLASHING		N/A
BEACON		N/A
UTILITY POLE / POWER LINE		N/A
TOPOGRAPHIC CONTOURS		N/A
CANAL		
AIRPORT REFERENCE POINT		
SECTION CORNER		N/A



MAGNETIC  
TRUE  
DECLINATION:  
15° 7' E  
OCTOBER 2007  
ANNUAL RATE OF CHANGE:  
0° 6' W



**EXISTING RUNWAY PROTECTION ZONE**  
250' x 450' x 1,000'  
20:1 Approach Slope

**FUTURE RUNWAY PROTECTION ZONE**  
500' x 700' x 1,000'  
34:1 Approach Slope

**THRESHOLD SITING SURFACE**  
400' x 3,800' x 10,000'  
20:1 Approach Slope

**EXISTING RUNWAY PROTECTION ZONE**  
250' x 450' x 1,000'  
20:1 Approach Slope

**FUTURE RUNWAY PROTECTION ZONE**  
500' x 700' x 1,000'  
34:1 Approach Slope

**THRESHOLD SITING SURFACE**  
400' x 3,800' x 10,000'  
20:1 Approach Slope

**NOTES**

(A) Latitude and longitude are NAD83. Elevations are NAVD88. Coordinates for existing runway ends taken from National Geodetic Survey preliminary survey results from September 2008 survey. Future runway end coordinates calculated from existing coordinates.

(B) Existing non-precision marking to be removed and repainted as standard visual marking. Pavement to remain as paved overrun.

(C) This area subject to agricultural leasehold. Includes undeveloped land outside of OFA.

(D) Future detention basin to be designed to prevent it from becoming a wildlife attractant.

AIRPORT DATA		
	EXISTING	FUTURE
AIRPORT REFERENCE CODE	B-1 (small)	B-II
CRITICAL AIRCRAFT	Beech Baron 58	Cessna Bravo
AIRPORT REFERENCE POINT (A)	Latitude 39°30'56.7" N Longitude 122° 13' 02.2" W	Latitude 39°30'57.4" N Longitude 122° 13' 02.6" W
AIRPORT ELEVATION (Above Mean Sea Level)	141'	No Change
MEAN MAX. TEMP. (Hottest Month)	96° F	No Change
AIRPORT AND TERMINAL NAVIGATIONAL AIDS	VOR/DME/GPS	No Change
GPS APPROACH ESTABLISHED	Yes	No Change
AIRPORT ACREAGE	Fee Simple	288
	Avigation Easement	0
		315
AIRCRAFT PARKING SPACES	Tiedowns	35
	Hangar Units	49
	Helicopter	1
		No Change

SUBMITTED BY:  
**COUNTY OF GLENN**

By \_\_\_\_\_ Date \_\_\_\_\_

FAA-Approval Space

2	Revised internal road alignment	Sept. 2010
1	Revised coordinates and east property line.	12/10/08
NO.	REVISION	SPONSOR
<b>WILLOWS-GLENN COUNTY AIRPORT</b> <b>WILLOWS, CALIFORNIA</b> <b>AIRPORT LAYOUT PLAN</b>		
		133 Aviation Boulevard, Suite 100 Santa Rosa, California 95403 (707) 526-5010 Fax (707) 526-9721 www.meadhunt.com
DESIGN:	DD	DATE: September 2010
DRAWN:	TE/GJ	SHEET 1 OF 6

The preparation of these documents was financed in part through a planning grant from the Federal Aviation Administration as provided under Section 505 of the Airport and Airway Improvement Act of 1982, as amended. The contents do not necessarily reflect the official views or policy of the FAA. Acceptance of these documents by the FAA does not in any way constitute a commitment on the part of the United States to participate in any development depicted herein nor does it indicate that the proposed development is environmentally acceptable in accordance with appropriate public laws.