

BUILDING AND FACILITY LEGEND

NO.	DESCRIPTION
1	AIRPORT OFFICE AND PILOT'S LOUNGE (To be replaced)
2	FBO MAINTENANCE HANGAR
3	T-HANGAR BUILDING
4	CONVENTIONAL STORAGE HANGAR
5	PORTABLE HANGARS
6	RESIDENCE/WATCHMAN'S QUARTERS (To be removed)
7	ABOVE GROUND FUEL TANK
8	UNDERGROUND FUEL STORAGE (Private)
9	AGRICULTURAL DISPOSAL POND (To be removed)
10	WIND CONE AND SEGMENTED CIRCLE (Lighted)
11	STORAGE SHED
12	RESIDENCE/FARM BUILDING
13	AIRPORT OFFICE/PILOT'S LOUNGE (Future)
14	T-HANGAR BUILDING (Future)
15	CONVENTIONAL/CORPORATE HANGAR SITES (Future)
16	MUNICIPAL WELL
17	BASED AIRCRAFT APRON
18	TRANSIENT AIRCRAFT APRON (Future)
19	RESERVE FOR AVIATION USE (Future)
20	CONVENTIONAL STORAGE HANGAR (Future)
21	AUTO PARKING (Future)
22	SUPPLEMENTAL WIND CONES (Future)

RUNWAY DATA

RUNWAY 15-33	
EXISTING	FUTURE
RUNWAY CLASSIFICATION	A1 B2
PHYSICAL LENGTH AND WIDTH	4,500'x60' 4,500'x75'
EFFECTIVE GRADIENT	0.2% SAME
PAVEMENT STRENGTH (SINGLE WHEEL)	20,000 lbs. 35,000 lbs.
APPROACH VISIBILITY MINIMUM	1 MILE 1 MILE
APPROACH SLOPE	15 20:1 20:1
APPROACH AND LANDING AIDS	15 3.5' PAPI 3.5' PAPI
RUNWAY END COORDINATES	15 Longitude 39°43'35"N 122°08'54"W 33 Longitude 39°42'52"N 122°08'40"W
CRITICAL AIRCRAFT	15 PAVEMENT STRENGTH SM. BUSINESS JET MED. BUSINESS JET 33 WINGSPAN SM. TWIN MED. TWIN
RUNWAY LIGHTING	15 MED. INTENSITY 33 MED. INTENSITY
TAXIWAY LIGHTING	15 REFLECTORS 33 REFLECTORS
RUNWAY MARKING	15 V 33 V
RPZ DIM INHER	500' 500'
RPZ DIM OUTER	700' 700'
RPZ DIM LENGTH	1000' 1000'
OFA DIM WIDTH	400' 500'
OFA LENGTH BEYOND RW END	240' 300'
RSA DIM WIDTH	120' 150'
RSA LENGTH BEYOND RW END	240' 300'

AIRPORT DATA

TERMINAL NAVIGATIONAL AIDS	EXISTING VOR GPS 215' MSL 430±	FUTURE VOR GPS 215' MSL 430±
AIRPORT ELEVATION	215' MSL	SAME
AIRPORT REFERENCE POINT	Latitude 39°43'13"N Longitude 122°08'42"W	SAME
MEAN MAX. TEMP., HOTTEST MONTH	96° F.	SAME
AIRPORT SERVICE LEVEL	G.A.	SAME
AIRPORT ACREAGE	Free Simple Title 390± 40±	430± 41
BASED AIRCRAFT SPACES	County Tiedowns 28 50	41 100±
	HANGAR SPACE (County and Private)	
	FBO AREA (Approx.)	0 10±

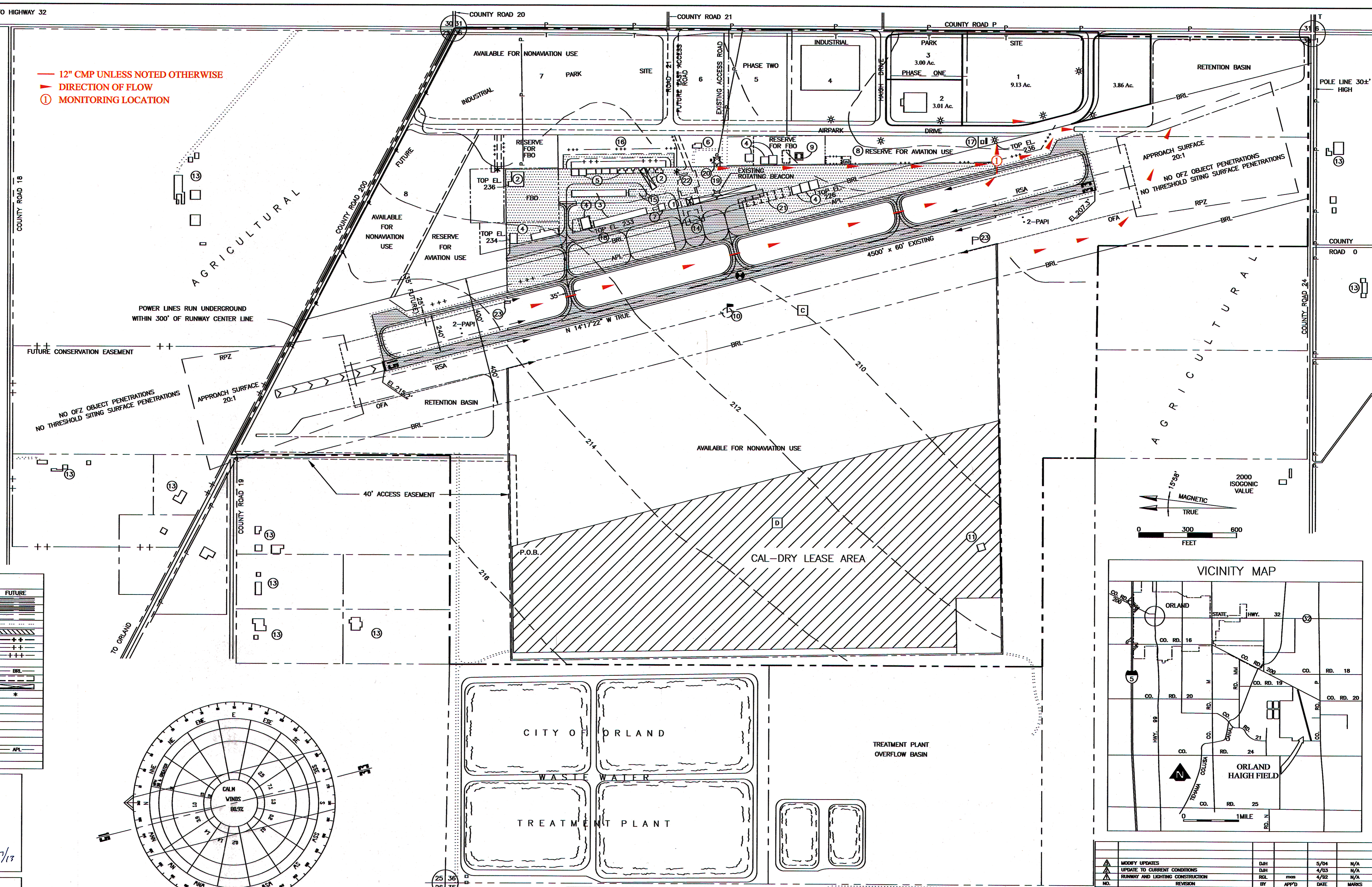
DRAWING LEGEND

	EXISTING	FUTURE
ASPHALT MAT IN AVIATION USE	---	---
PAVEMENT OVERLAY/NEW PAVEMENT	---	---
OTHER PAVEMENT IN USE	---	---
GRAVEL SHOULDER/ROAD	---	---
PAVEMENT TO BE REMOVED	---	---
AIRPORT PROPERTY LINE	---	---
AVIATION/CONSERVATION EASEMENT	---	---
INTERNAL LEASE OR LAND USE BOUNDARY	---	---
OTHER PROPERTY LINES	---	---
BUILDING RESTRICTION LINE	---	---
BUILDINGS	---	---
BUILDINGS TO BE REMOVED	---	---
GATE	---	---
TOPOGRAPHIC CONTOURS	---	---
POWER LINE	---	---
TELEPHONE LINE	---	---
AIRPORT REFERENCE POINT	---	---
LIGHT STANDARD	---	---
SECTION CORNERS	---	---
AIRCRAFT PARKING LIMIT	---	---

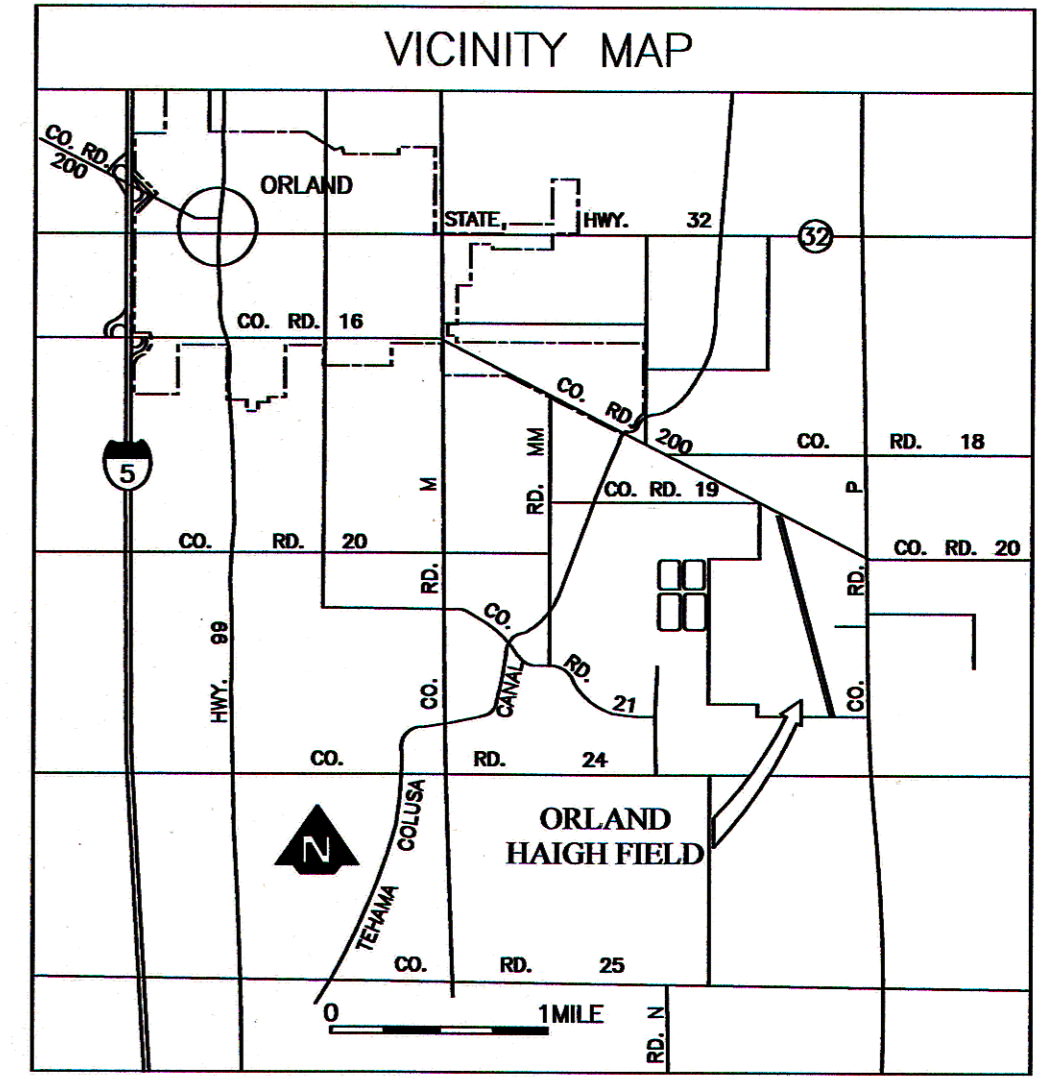
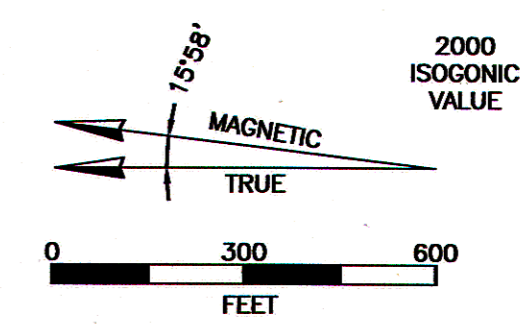
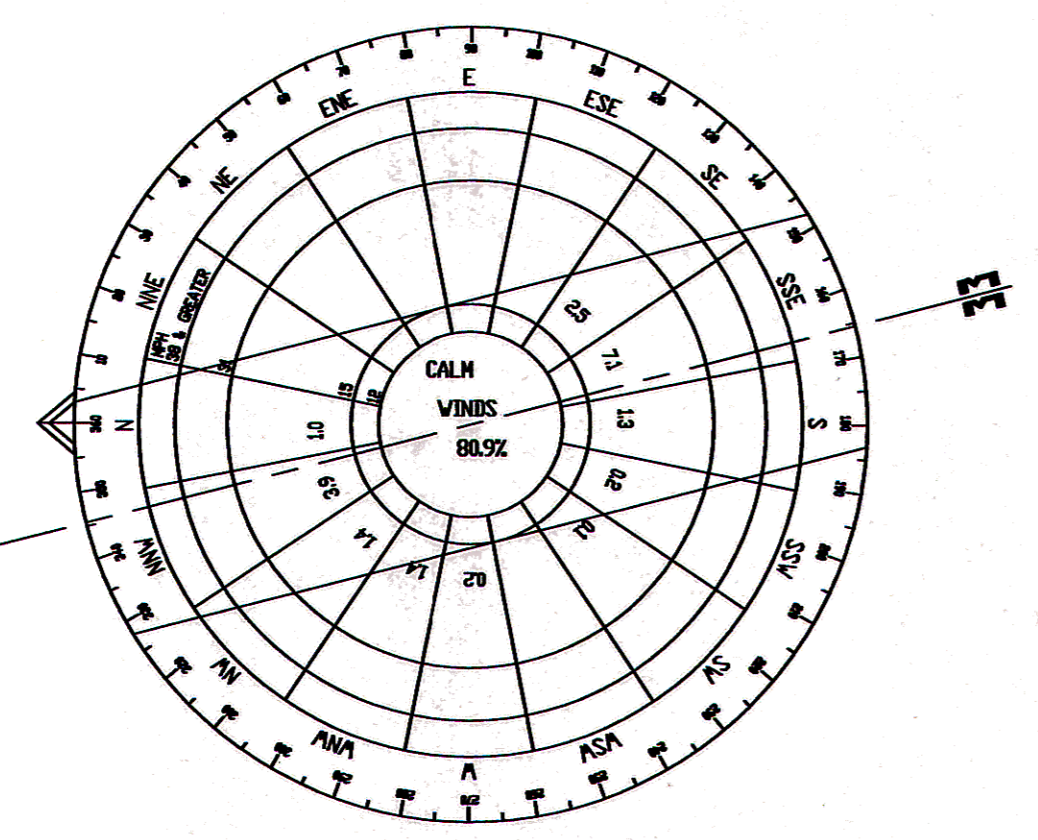
SUBMITTED BY:
County of Glenn

APPROVED: *Morton Edgerton* 5/27/13
County Engineer Date

FAA Approval space



12" CMP UNLESS NOTED OTHERWISE
DIRECTION OF FLOW
MONITORING LOCATION



- NOTES**
- [A] Coordinates measured from USGS topographic maps; not verified by field survey.
 - [B] Currently no distinction between based and transient aircraft tiedowns.
 - [C] Area currently used by county for road mix preparation.
 - [D] Area currently used for beet drying.
 - [E] Perimeter of aviation use areas to be fenced.

NO.	REVISION	DATE	MARKS
1	MODIFY UPDATES	5/04	N/A
2	UPDATE TO CURRENT CONDITIONS	4/03	N/A
3	RUNWAY AND LIGHTING CONSTRUCTION	4/02	N/A

**ORLAND HAIGH FIELD
GLENN COUNTY, CALIFORNIA**

SWPPP SITE MAP

GLENN COUNTY
PUBLIC WORKS DEPARTMENT
Willows, California

APPROVED BY: _____ DATE: APRIL 2003
DRAWN BY: BE SCALE: 1"=300' SHEET: 1 OF 1