

BRINGING IT ALL INTO FOCUS

# Time for a little Q&A

## A LOOK AT THE BENEFITS

### What exactly do my EyeMed benefits cover?

If you're thinking about EyeMed, you'll want to connect with your employer to learn about the benefit options. Already a member? The easiest way to find your benefit information is to create a member account on [eyemed.com](http://eyemed.com) or grab the EyeMed Members App (App Store or Google Play).

### Does EyeMed offer any extra discounts?

We sure do. At participating in-network providers, members get 40% off an extra pair of eyeglasses or 20% off a partial pair (lenses only or frames only).\* You also get 20% off non-prescription sunglasses and accessories, and discounts on LASIK laser vision correction. Call 1.800.988.4221 to find a LASIK location near you.

### Can I use EyeMed benefits online?

Instantly apply your in-network benefits at checkout, with free shipping, free returns and no paperwork at these participating providers: [lenscrafters.com](http://lenscrafters.com), [targetoptical.com](http://targetoptical.com), [ray-ban.com](http://ray-ban.com), [glasses.com](http://glasses.com) and [contactsdirect.com](http://contactsdirect.com).

### Can I get the same kind of care with a retail provider as I can with an independent doctor?

Many optometrists share space with a retail optical store, but operate a separate practice. All of them, wherever they practice, must meet the same state licensing and credentialing requirements. One advantage of using a vision carrier, like EyeMed, is that credentials of every in-network eye doctor are thoroughly examined and verified, so you can feel confident you're getting access to qualified eye doctors.

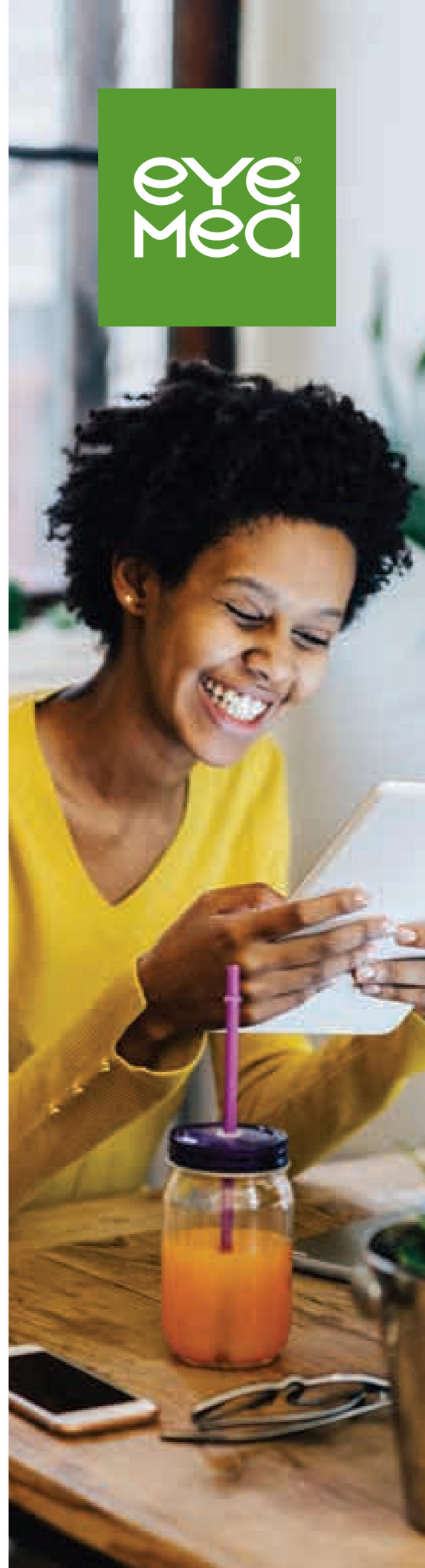
## MEMBER HOW-TO TIPS

### How do I use my benefits?

At EyeMed, we're all about easy. Just choose an in-network eye doctor from our Enhanced Provider Search, schedule your visit and go in for care or eyewear. You don't even need your ID card – just give them your name and birthday. When you stay in-network, we'll handle all the paperwork.

### How do I find an eye doctor in my network?

The Enhanced Provider Search on Member Portal and the EyeMed Members App has thousands of in-network eye doctors to choose from. Filter your search to find ones near you with the brands, hours and services you most want.

The EyeMed logo is displayed in white text on a green square background. The word "eye" is in a lowercase, sans-serif font, and "Med" is in a larger, bold, uppercase, sans-serif font. A registered trademark symbol (®) is located to the upper right of the "e" in "eye".

## How do I get on-the-go access?

The EyeMed Members App can do almost everything that Member Portal can. Find an eye doctor, set an appointment, review your benefits, check claims, find special offers, show your ID card—even store your vision prescriptions and set exam reminders. Download it through the App Store or Google Play.

## How do I submit a claim?

When you see one of our in-network eye doctors, you won't have to; we take care of all the paperwork. By the way, you'll save money by staying in-network, too. If you need an out-of-network claim form, log into your member account to find one.

## How do I get an ID card replacement or extra cards?

If you lose your card or need extras for your family, log into [eyemed.com](http://eyemed.com) to print a replacement, or use your digital ID on the app. Here's a tip: you don't even need the card when you visit your eye doctor.

## VISION AND YOUR HEALTH

### I don't wear glasses and can see fine. Do I still need an eye exam?

Getting an eye exam isn't just about needing glasses. It's also about your health. An eye exam can detect eye health problems like glaucoma or cataracts, but it can also help identify early signs of serious diseases, like high blood pressure, diabetes and high cholesterol—just to name a few.<sup>1</sup>

### How often should I get an eye exam?

Vision changes can happen slowly—you may not even notice it. Annual eye exams are a good rule of thumb unless your doctor suggests more frequent checks; we suggest making it part of your regular preventive care routine.

### At what age should my child first visit the eye doctor?

The American Optometric Association recommends a first eye exam between 6 months and 1 year of age.<sup>2</sup>The doctor may check for nearsightedness, farsightedness, astigmatism, amblyopia (or "lazy eye"), proper eye movement and eye alignment, and how the eye reacts to light and darkness. They also recommend an exam between the ages of 3 and 5, and every year after that.

### My child gets a vision screening at school, so there's no need for an eye exam, right?

A vision screening does not take the place of a comprehensive eye exam. School screenings generally check for color blindness and your child's ability to see far away. A comprehensive exam will evaluate the entire structure of the eye.

**INDEPENDENT  
PROVIDER  
NETWORK**



**LENSCRAFTERS**

**PEARLE  
EST. 1961  
VISION**

**OPTICAL**



Thinking of becoming a member? Learn more at [enroll.eyemed.com](http://enroll.eyemed.com)

Looking to stay healthy with vision? Learn how at [eyesiteonwellness.com](http://eyesiteonwellness.com)

Already a member? Manage benefits at [eyemed.com](http://eyemed.com)

\*Discounts are for in-network providers only. Benefits may not be combined with any discount, promotional offering, or other group benefit plans. Additional limitations and exclusions may apply. Log into your member account for full details. <sup>1</sup> "5 Health Problems Eye Exams Can Detect," YourSightMatters.com, March, 2016. <sup>2</sup> "Comprehensive pediatric eye and vision examination"; (2017 guideline brief); American Optometric Association; <https://www.aoa.org/Documents/AOA%20Executive%20Summary%20Pediatric%20Eye%20Exam%20Guidelines%20Revised%2003.05.18.pdf>